

Espay Solar Energy S.L.

1g wind power annual power generation



Overview

, the power generated by one wind turbine per year typically ranges from 6 to 10 million kWh, depending on size and location. 5-3 MW turbine can generate 7-9 GWh annually in high-wind areas. This includes both onshore and offshore wind sources. Data source: Ember (2026); Energy Institute - Statistical Review of World Energy (2025) - Learn more about this data Measured in terawatt-hours. (And. • Brazil becomes second largest market and joins top 5 wind power nations The full report as of 23 April 2025 can be downloaded here as PDF file Bonn (WWEA) - In 2024, new wind turbine installations fell far short of expectations, reaching 121'305 Megawatt, slightly less than in 2023, when 121'465. U. Data from our Power Plant Operations Report show that U. wind generation in 2023 totaled 425,235 gigawatthours (GWh). This calculator estimates the annual electricity generation of a wind turbine based on capacity factor, wind speed, efficiency and rated power. China's onshore wind capacity tripled from 2019 to 69 GW, whereas the United States' capacity doubled to 17 GW: these two countries together accounted for 79% of.

1g wind power annual power generation



Wind generation declined in 2023 for the first time since the 1990s

U.S. electricity generation from wind turbines decreased for the first time since the mid-1990s in 2023 despite the addition of 6.2 gigawatts (GW) of new wind capacity last year.

Basics of Wind Energy Production

Power production from a wind turbine is a function of wind speed. The relationship between wind speed and power is defined by a power curve, which is unique to each turbine model and, in some cases, ...



Wind energy generation vs. installed capacity, 2024

Wind energy generation, measured in gigawatt-hours (GWh) versus cumulative installed wind energy capacity, measured in gigawatts (GW). Data includes energy from both onshore and offshore wind ...

Wind Power Generation

However, the power generated by wind turbines varies rapidly due to the fluctuation of wind speed and wind direction. It is also dependent on terrain, humidity, date and time of the day, making grid ...

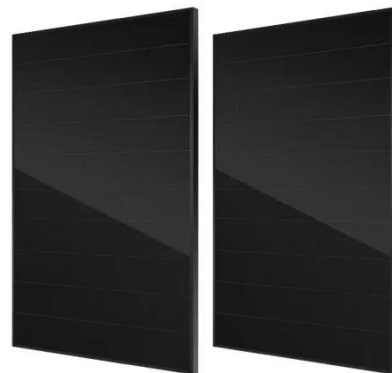


Global Statistics

The world's installed wind power capacity now meets well over 10% of global electricity demand - and much more than nuclear power. More than 30 countries now have a share of wind ...

Wind Energy Factsheet

Wind could provide 20% of U.S. electricity by 2030 and 35% by 2050. 11 Five of the eight Great Lakes states have offshore wind energy potentials that exceed their annual electricity demand (MI, WI, NY, ...



How Much Power is 1 Gigawatt?

For instance, at the end of 2023, there were over 150.5 GW of wind power and 137.5 GW of solar photovoltaic (PV) total in the United States. To help put this

number in perspective, it's important to ...



Wind power generation, 2025

This dataset contains yearly electricity generation, capacity, emissions, import and demand data for over 200 geographies. You can find more about Ember's methodology in this ...

114KWh ESS



Power Generated By One Wind Turbine: Output, Cost, And Real ...

Learn how much power generated by one wind turbine really is, from daily and yearly output to homes powered and real U.S. wind energy facts.

Wind Turbine Electricity Generation Estimator , True Geometry's Blog

Wind Turbine Energy Generation Calculation This calculator estimates the annual electricity generation of a wind turbine based on capacity factor, wind

speed, efficiency and rated power.



Contact Us

For catalog requests, pricing, or partnerships, please visit:
<https://www.espay.es>

