

Espay Solar Energy S.L.

625 Photovoltaic panel specifications and dimensions



Overview

Dimensions: 2465×1134×30 mm, precisely engineered for efficient solar panel installation. Shibana Energy's "Shibana PowerMax 625" sets a new standard in the realm of solar panel technology, offering an advanced solution for both residential and commercial solar power systems. This product epitomizes our dedication to providing sustainable energy solutions through innovative renewable. Better light trapping and current collection to improve module power output and reliability. 0 technology has better reliability and lower LID/LETID. Excellent Anti-PID performance guarantee via optimized mass-production process and materials control. Certified to. N-type modules with Tunnel Oxide Passivating Contacts (TOPcon) technology offer lower LID/LeTID degradation and better low light performance. Anti-Reflective (AR) Coated Glass for Enhanced Power Positive Power.

625 Photovoltaic panel specifications and dimensions

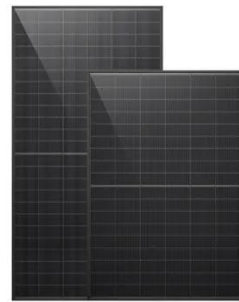


Rayzon Solar , TOPCon 210R 625 Wp Solar Panel

Rayzon Solar's TOPCon 210R 625 Wp panel features advanced N-type TOPCon technology with 182mm M10 cells for high-efficiency solar performance.

Shiban PowerMax 625 - Shiban Energy

Dimensions: 2465×1134×30 mm, precisely engineered for efficient solar panel installation. Weight: A well-balanced 34.6 kg, ideal for both residential and commercial installations.



Canadian TOPCON N-Type Bifacial 625watt Solar Panel



Voltage at Maximum Power (Vmp): Approximately 44.34V
 Current at Maximum Power (Imp): Approximately 13.76A
 Dimensions: 2382 × 1134 × 30 mm
 Weight: Approximately 32.8 kg
 Glass: 2.0 ...

JA 600Watt 610Watt 625 Watt

Bifacial Mono Solar Panel

JA Solar N-Type 600-625W Bifacial Dual Glass High Efficiency PV Module Brand Name: JA Solar Cell size: 210mmx210mm Solar Panel Efficiency:22.4% Solar Panel Size: 2465*1134*35mm Model ...



625W Solar Panel

Specifications Mechanical Characteristics Cell Type: N- type Mono-crystalline No. of cells: 156 (78x2) Dimensions: 2465x1134x30 mm Weight: 34.0 kg Front Glass: 2.0 mm, Anti-Reflection Coating Back ...

625 Photovoltaic Panel Specifications

100W, 26.5 V, 3.77 A, 15 W max output, 23%, 1446 x 525 x 45 mm, 5 kg High Conversion Efficiency: The solar panel converts up to 23% of sunlight into solar energy, charging your solar generators ...



JKM625-650N-78HL4-BDV-F9-EN

*Note: For specific dimensions and tolerance ranges, please refer to the corresponding detailed module drawings.



Support Customized Product

NEXT GEN N-TYPE BIFACIAL SOLAR PV MODULE 610

t Model Parameters Capacity rating Wp
 Max. Power Volatage in V Max. Pow.
 India Tel:- +91- 120-4302. 00, 4526100
 Toll Fr.



JKM605-625N-78HL4-BDV-F6-EN

Specifications included in this datasheet are subject to change without notice.

TW Solar Panel 625w Bifacial N-Type

TW Solar 625W Standard Plus panel, identified as the TWMND-78HD625, is a high-performance bifacial N-type TOPCon module designed for both

residential and commercial applications.



Contact Us

For catalog requests, pricing, or partnerships, please visit:
<https://www.espay.es>

