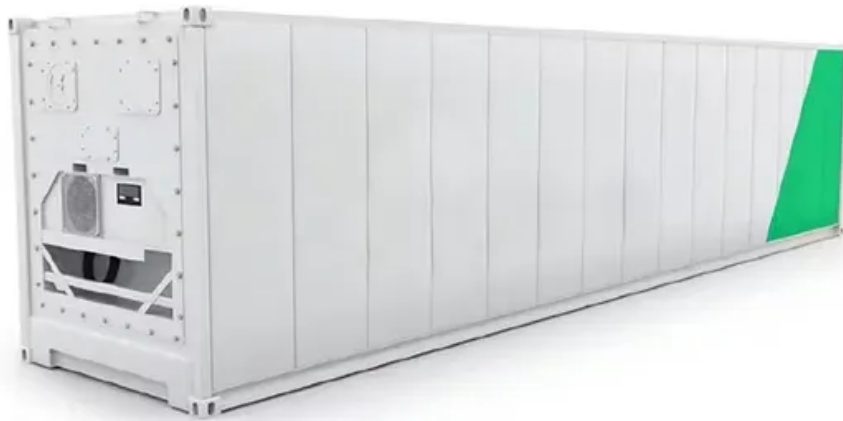


**Espay Solar Energy S.L.**

# **Bangkok distributed energy storage high voltage grid connection**



## Overview

---

The Red Line began operations in late 2021, powered by a compact Hitachi Energy gas-insulated grid connection, which feeds electricity from the national power grid into the Red Line rail system and ensures the voltage remains stable throughout the line. It is the project for installation of 1.2 MWh/2 MW medium voltage energy storage system. There are two functions for this system: Load Leveling for reducing maximum demand and Back Up to always support power demand and electric energy in the event when the main grid failure. This could help to. Electricity Generating Authority of Thailand (EGAT) is a state enterprise responsible for power generation, system control, and the transmission of electricity nationwide. As such, government procurement plays a key role in the deployment of new infrastructure. Shared energy storage power stations—the kind of innovation that could finally crack Southeast Asia's renewable energy puzzle—are gaining traction. But why now, and what makes.

## Bangkok distributed energy storage high voltage grid connection

---

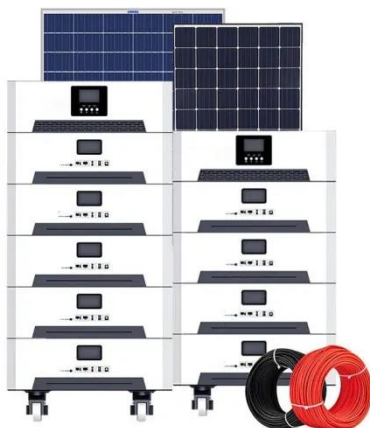


### Thailand's Smart Grid

MEA has conducted studies and developed the MEA EV Smart Charging System to manage energy within EV charging stations. MEA has also developed algorithms to analyze EV usage data, which ...

### Bangkok Shared Energy Storage: Powering Thailand's Renewable ...

As Bangkok's skyscrapers shimmer under the tropical sun, a quiet revolution is unfolding beneath the city's energy grid. Shared energy storage power stations--the kind of innovation that could finally ...



### Thailand's emerging energy storage sector

Given the excess of dispatchable power generation capacity and minimal penetration of VRE sources, there has been little push for storage technologies to enable greater deployment of ...

### Hitachi Energy Powers Thailand's

## Digital Energy Shift

Grid-eXpand(TM) is a modular, prefabricated grid-connection solution that enables faster, simpler and more efficient expansion of power capacity to support Thailand's clean energy transition.



## Bangkok Hybrid Energy Storage Project Bidding: Opportunities

The city's new hybrid energy storage project bidding initiative combines solar power, battery storage, and smart grid technologies - a blueprint for urban energy transformation. Let's explore what this ...

## Transmission System

EGAT's transmission network connects power plants to the distribution systems of the Metropolitan Electricity Authority (MEA) and the Provincial Electricity Authority (PEA), where the electric voltage is ...



## Thailand Smart Energy Storage: Powering Sustainable Growth in ...

Can Thailand smart energy storage solutions bridge the gap between

renewable ambitions and grid reliability?  
With 35% renewable energy targeted by 2037, Thailand's power grid faces unprecedented ...



### Bangkok distributed energy storage high voltage grid connection

The Red Line began operations in late 2021, powered by a compact Hitachi Energy gas-insulated grid connection, which feeds electricity from the national power grid into the Red Line rail system and ...



### Thailand - Southeast Asian PV Storage Powerhouse

The Thailand Electricity Generation Authority dispatches the power grid through the National Dispatch Center (NCC) in Bangkok and five Regional Dispatch Centers (RCC) in the North, ...



### bangkok distributed energy storage management

Distributed energy storage systems (DESS) have emerged as the missing puzzle piece, offering localized solutions

that complement Thailand's solar and wind energy boom.



---

## Contact Us

---

For catalog requests, pricing, or partnerships, please visit:  
<https://www.espay.es>

