

Espay Solar Energy S.L.

Battery capacity standards for communication base stations



Battery capacity standards for communication base stations

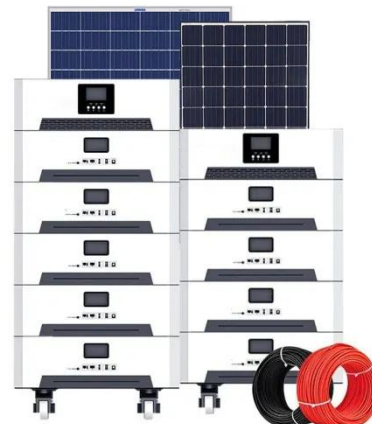


Communication base station backup battery model

What makes a telecom battery pack compatible with a base station?
Compatibility and Installation Voltage
Compatibility: 48V is the standard voltage for telecom base stations, so the battery pack's ...

Understanding Backup Battery Requirements for Telecom Base Stations

Telecom base stations require reliable backup power to ensure uninterrupted communication services. Selecting the right backup battery is crucial for network stability and efficiency.



Requirements for energy storage batteries for communication ...

Regulatory standards for energy storage directly shape the trajectory of battery technology adoption in communication base stations by mandating safety, efficiency, and environmental



Communication Base Station Li-ion

Battery Market's Technological

This report provides comprehensive coverage of the communication base station Li-ion battery market, segmented by application (Macro Base Station, Micro Base Station, Others), type ...



Battery specifications for communication base stations

Among various battery technologies, Lithium Iron Phosphate (LiFePO4) batteries stand out as the ideal choice for telecom base station backup power due to their high safety, long lifespan, and excellent ...



Battery quality requirements for communication base stations

The first step in Understanding Backup Battery Requirements for Telecom Base Stations Telecom base stations require reliable backup power to ensure uninterrupted communication services.



Communication Base Station Backup Battery

Certified by EN50155 railway standard, with strong electromagnetic interference resistance. 1920Wh capacity meets the



communication needs of nomadic seasonal migration. Special insulation design ...

How to Select the Best ESTEL Battery Backup for Base Stations

Choose the best telecom battery backup systems by evaluating capacity, battery type, environmental adaptability, maintenance, and scalability for base stations.



Communication Batteries: Why Telecom Base Stations Have Unique ...

The phrase "communication batteries" is often applied broadly, sometimes including handheld radios, emergency devices, or general-purpose backup batteries. In practice, when ...

What Are the Critical Aspects of Telecom Base Station Backup ...

Critical aspects include battery chemistry, capacity, cycle life, safety features, thermal management, and

intelligent battery management systems.
These factors collectively guarantee
stable, efficient, and ...



Contact Us

For catalog requests, pricing, or partnerships, please visit:
<https://www.espay.es>

