

Espay Solar Energy S.L.

Can a 12V solar panel be directly connected to a water pump inverter



Can a 12V solar panel be directly connected to a water pump invert



How to Connect Solar Panel to Water Pump

While it's technically possible for you to connect a solar panel directly to an AC or DC water pump, it's not advisable to do so. Solar panels' irregular output can damage the pump over ...

How to Connect Solar Panels to Your Water Pump?

You need to determine the power requirements of your water pump and then choose a solar panel with the necessary capacity. Consulting with a professional can help.



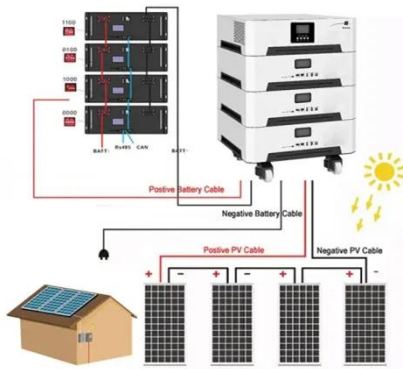
Can I Connect a Solar Panel Directly to a Water Pump?

Yes, you can connect a solar panel to a water pump, but it requires specific components to ensure safe and efficient operation. Don't leave yet--understanding system design is key to long-term savings ...

Can I connect a solar panel directly

to a pump?

These systems are also typically sold as "Direct Connect", connecting a pump directly via wire to a solar panel. The pump will run, but only under completely ideal conditions.



Can I Connect My Solar Panels Directly to My Inverter?

While it's technically possible to connect solar panels directly to an inverter, it's not always the safest or most efficient choice. Using a charge controller, proper wiring, and protective ...

Will a 12v DC water pump work if directly connected to solar panels

Will a 12v DC water pump work if directly connected to solar panels without a battery? Most of common DC water pumps can work directly connected to the solar panel, but their biggest problem is stuck.

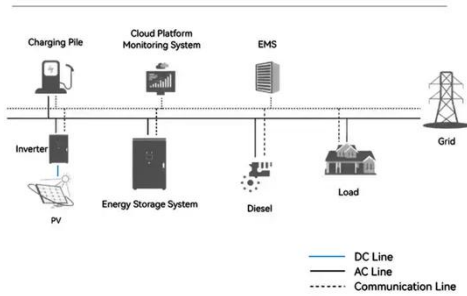


How To Pair Solar Panels with Your Pump Inverter for Optimal Output

Here is the complete guide on how you can pair your solar panels with a pump inverter to ensure good results. This

technology drastically changes the way they interact with pump inverters, making it ...

System Topology



How To Connect A Solar Panel To A Water Pump (Step By Step)

Can I connect a solar panel directly to a water pump? You could connect a solar panel directly to a water pump. It is not a good idea, though. The erratic pulse of electricity produced by the ...



Can I Run A Water Pump Straight From A Solar Panel?

In fact, we see that most water pumping applications are well suited for solar systems that are directly connected to solar panels. Let's chat through a few examples of when a solar powered pump might ...

How to run a small water pump using a solar panel?

Buy a small, low power 12V pump. Connect it straight to the panel. It'll run

most of the time when the sun is shining.



Contact Us

For catalog requests, pricing, or partnerships, please visit:
<https://www.espay.es>

