

**Espay Solar Energy S.L.**

# **Can outdoor power supply batteries be equipped with additional batteries**



## Overview

---

With a dual-battery system, you can have a single primary battery for starting the vehicle and another auxiliary battery for running all the accessories and equipment. Learn key factors like device wattage, usage hours, and battery types - plus real-world examples to simplify your energy planning. By adding an additional battery (commonly lead-acid deep-cycle, AGM, or Gel type) for your devices' power needs, you keep your starting battery “isolated” so that it is never at risk of being run completely dead and leaving you stranded. This also enables you to add enough. This setup consists of two types of batteries: a starter battery and a house battery. On the other hand, the house battery is designed to power all the accessories in your vehicle when the engine is. Are you looking to expand the battery capacity of your portable power station?

If you're considering increasing the capacity beyond the initial charge, the answer lies in scalable battery packs.

## Can outdoor power supply batteries be equipped with additional ba

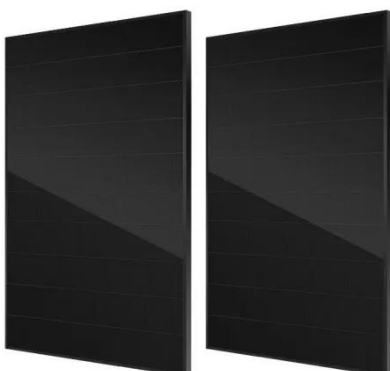


### How Many Batteries Are Suitable for Your Outdoor Power Setup? A

Summary: Choosing the right number of batteries for outdoor power systems depends on energy demands, usage scenarios, and equipment compatibility. This guide breaks down key ...

### How to Expand Your Portable Power Station with Battery Packs

Extended Runtime: Extra battery packs allow your portable power station to run longer, making them ideal for extended outdoor trips, prolonged power outages, or demanding work ...



### Dual Battery Set Up: What You Need to Know

Discover the advantages of a dual battery setup for your vehicle or boat. Dive into the benefits, proper selection, and maintenance tips to supercharge your journey.

### The 7 Best Portable Power Stations for Outages and Outings

Bring big backup power with you with these expert-recommended portable power stations, which can store enough power to charge electronics, appliances, and more.

- ✓ LIQUID/AIR COOLING
- ✓ INTELLIGENT INTEGRATION
- ✓ PROTECTION IP54/IP55
- ✓ BATTERY /6000 CYCLES



## How to Choose The Best Dual Battery Setup , Take The Truck

A dual battery setup can provide a reliable way to meet your power needs while camping and overlanding. Learn how to select the right dual battery system for your next off grid camping or ...

## Getting the most from your battery-powered outdoor equipment

It's a good idea to have a second battery on hand and fully charged so you can switch mid-job. Most consumers buy more than one piece of battery-powered outdoor equipment, and each one can ...



## How to Build the Ultimate Off-Road Power System with Dual Batteries

With a dual-battery system, you can have a single primary battery for starting the vehicle and another auxiliary battery



for running all the accessories and equipment. This way, even if your ...

## How to Expand Your Battery System for More Power and Efficiency

Expanding your battery system is a great way to increase your energy storage capacity and enhance the reliability of your power setup. Whether you're upgrading an RV, boat, overland ...



## Which Battery Is Best for Outdoor Power Stations?

For more demanding outdoor use, LFP batteries are ideal for their stability and long lifespan, while 21700 lithium batteries offer superior capacity for extended power needs.

## How Many Batteries Are Enough for Outdoor Power Supply: A ...

This guide explains how to calculate battery capacity for camping, RV trips, and off-grid living. Learn key factors like

device wattage, usage hours, and battery types - plus real-world examples to simplify ...



---

## Contact Us

For catalog requests, pricing, or partnerships, please visit:  
<https://www.espay.es>

