

Espay Solar Energy S.L.

China portable power station in congo

ESS



Overview

It is the first large-scale modern smart hydropower station in the DRC built entirely using Chinese standards, equipment, and technology, and the only one operating under the BOT (Build-Operate-Transfer) business model in the DRC. On June 19, the Busuanga Hydropower Station in the Democratic Republic of the Congo (DRC), invested by China Railway Resources Group Co., a subsidiary of China Railway Group Limited, reached a milestone of 1,000 days of safe operation. The cumulative power generation has exceeded 4. With an impressive. KINSHASA, Oct. During the ceremony, Tshisekedi warmly congratulated the completion of the Kinsuka. The 220kilovolt transmission line section L61/64 and six new 220kV substations constructed by POWERCHINA in the Lualaba Province and Upper Katanga Province of the Democratic Republic of Congo (DR Congo) recently passed inspection and have commenced power transmission, marking the successful. So what exactly can a 1kWh portable power station run?

In most cases, a 1kWh system can run: Actual usage depends on device power and usage time. A small portable power station is not meant for: This realistic understanding helps users in Kinshasa choose the right system without disappointment.

China portable power station in congo



Transmission line and new substations begin operating in DR Congo

The 220kilovolt transmission line section L61/64 and six new 220kV substations constructed by POWERCHINA in the Democratic Republic of Congo (DR Congo) recently passed inspection and ...

DRC: Chinese-built hydroelectric power plant illuminates Kinshasa

In a transformative effort to address the persistent issue of insufficient electricity in Kinshasa, the capital of the Democratic Republic of Congo (DRC), Chinese companies, particularly



China-Constructed Busuanga Hydropower Station Operates Safely for ...

On June 19, the Busuanga Hydropower Station in the Democratic Republic of the Congo (DRC), invested by China Railway Resources Group Co., Ltd., a subsidiary of China Railway Group ...



DR Congo president inaugurates

Chinese-built power substation

DR Congo, Kinshasa: President of the Democratic Republic of the Congo (DRC) Felix Tshisekedi on Monday inaugurated the Chinese-built Kinsuka substation. The substation is located ...



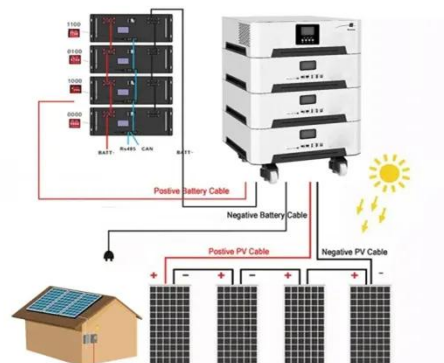
What Can a 1kWh Portable Power Station Run in DR Congo?



Portable Power Station , Understanding Real Electricity Needs in DR Congo In DR Congo, electricity shortages are common. During blackouts, people usually focus on lighting, communication, and ...

The 800MW Sounda Hydropower Plant: One of the Largest Dams in ...

The 800MW Sounda Hydropower Plant project in the Republic of Congo is a highly anticipated \$9.4 billion venture financed by China. The project has recently experienced an indefinite ...



Congo (DRC) Kinsuka 220kV substation and supporting power grid

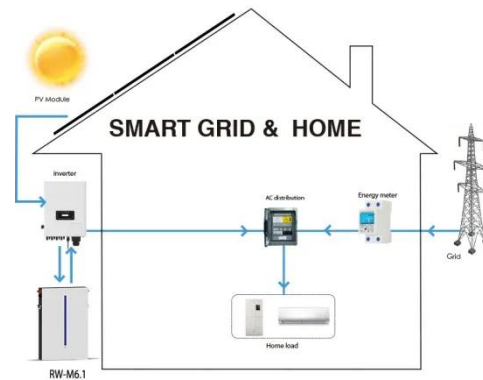
The Kinsuka Power Project is the first automated distribution network in the

Democratic Republic of the Congo and Kinshasa's largest and most technologically advanced substation. After ...



DRC President Inaugurates New Chinese-Built Hydropower Plant

The Chinese embassy in the Democratic Republic of the Congo announced that construction had begun on an enormous new art and cultural center in the capital Kinshasa.



China-Constructed Busuanga Hydropower Station Starts Generating ...

The station will not only bridge the electricity gap in the DRC and propel local industrial and socio-economic development, but will also significantly enhance the mining capacity of the country.

Contact Us

For catalog requests, pricing, or partnerships, please visit:

<https://www.espay.es>

