

Espay Solar Energy S.L.

Electrical Principle of Lithium Battery Energy Storage



**Low Voltage
Lithium Battery**

6000+ Cycle Life



Electrical Principle of Lithium Battery Energy Storage



Understand the working principle of lithium battery energy storage in

The working principle of a lithium-ion battery energy storage system is to utilize the migration of lithium ions between the positive and negative electrodes to achieve the process of ...

Lithium-ion batteries and the future of sustainable energy: A

This review offers valuable insights into the future of energy storage by evaluating both the technical and practical aspects of LIB deployment.



Lithium-ion Battery

A Lithium Ion (Li-Ion) Battery System is an energy storage system based on electrochemical charge/discharge reactions that occur between a positive electrode (cathode) that contains some ...

Design principle of lithium battery energy storage circuit

The lithium-ion battery (LIB) is a promising energy storage system that has dominated the energy market due to its low cost, high specific capacity, and energy density,

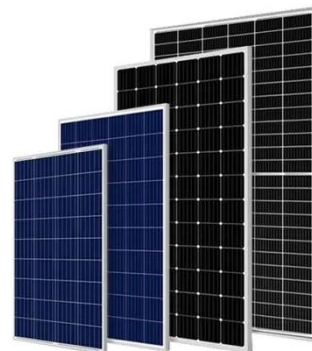


The Working Principle of a Lithium-Ion Battery

Charging the battery involves applying an external electrical voltage, which forces the chemical reaction to proceed in a non-spontaneous direction, storing energy. This voltage ...

How Lithium-ion Batteries Work , Department of Energy

While the battery is discharging and providing an electric current, the anode releases lithium ions to the cathode, generating a flow of electrons from one side to the other. When plugging ...



How Lithium-Ion Batteries Work: Structure and Operating Principle ...

Discover the structure and operating principle of lithium-ion batteries. Learn how these power sources work, from key components to charging and discharging



cycles.

Lithium-ion Battery Principles - Operating Principles of Lithium-ion

There is no change in the appearance of the ball, but the energy is stored in the form of height. In the same way, electrons store energy by moving to a higher energy location. In other ...



How Does a Lithium Battery Work? A Complete Guide

When the battery powers a device: Lithium ions move from the anode to the cathode through the electrolyte. Electrons are released from the anode and flow through the external circuit, ...



The Working Principle of Lithium Batteries , SolarCtrl

At the heart of every lithium-ion battery is a single cell composed of four main components: the anode, cathode, electrolyte, and separator. These

components work together to ...



Contact Us

For catalog requests, pricing, or partnerships, please visit:
<https://www.espay.es>

