

Espay Solar Energy S.L.

For remote areas use server racks with a depth of 600mm



**2MW / 5MWh
Customizable**



Overview

600mm depth: Ideal for shallow devices like patch panels and routers. Server cabinets are commonly found in a few standard depth measures, including 600mm (23. Standard server rack dimensions for depth would typically range between 800mm to 1200mm for full sized enterprise solutions. Smaller setups such as. Looking to install a wall mount rack in my garage. This rack will contain the house cabling patch panel, switch, unifi security gateway, a whole home audio amp, a HDbaseT matrix, and a UPS. This profile is 19 inches wide (48. 26. Whether you're upgrading a small server room in the Philippines, expanding a data hub in Spain, or setting up your first network cabinet in Uzbekistan, understanding the key features of server rack depth, U-height, and airflow will ensure system stability, scalability, and long-term ROI. This guide explores everything you need to know about rack mounting depth, how to measure it, and its importance in. When evaluating server rack sizes, three dimensions dominate the conversation: rack height, rack width, and rack depth. Each dimension influences how well your equipment fits, how efficiently you can manage cables, and how effectively you can maintain airflow and cooling.

For remote areas use server racks with a depth of 600mm

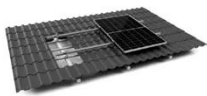


Which server rack should I choose?

All server racks are basically identical, but a number of choices have to be made before you can find the right one for you. In this article, we would like to give you some insights on how ...

Server Rack Sizes & Dimensions Explained: The Ultimate Guide to ...

Discover essential information on server rack sizes and dimensions, including heights, widths, and depths, in our ultimate guide. Optimize your setup today!



TILE ROOF SOLAR MOUNTING SYATEM



STANDING SEAM ROOF SYATEM



ADJUSTABLE TILT FLAT ROOF SYATEM



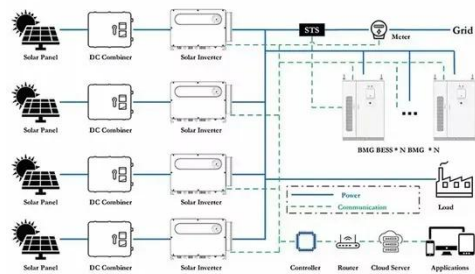
TRIANGLE FLAT ROOF SYATEM

How to Choose the Right Server Rack: Depth, U-Height, and Airflow

Choosing the right server rack means analyzing depth, U-height, and airflow, while considering future scalability, energy costs, and global standards. With options like 27U, 32U, and ...

What is Rack Mounting Depth

Understand server rack size, mounting depth & dimensions. Learn about rack depth, width, server rack dimensions and cabinet sizes for your data center or network rack.



Server Racks: Everything You Need to Know

Soundproofing a server rack is a good idea when the rack will be located in work areas, such as offices, recording studios, or residential areas. The best solution is a soundproof enclosure.

A Guide to Server Rack Sizes for Data Centers

With this reality in mind, keep reading for a guide to server rack sizes, including why server rack size matters, which sizes are available, and how to choose the right rack size for your workloads.



Pre-built Servers That Fit a 600mm Deep Rack? : r/homelab

Looking to install a wall mount rack in my garage. Most of these max out at 600mm deep, with ~550mm usable (post-to-post). This rack will contain the

house cabling patch panel, switch, unifi security ...



How Deep Should My Server Rack Cabinet Be? A Complete Guide

To determine the ideal depth for your server cabinet, begin by measuring the total depth of your deepest piece of equipment. You'll want to include rear cable clearance and airflow zones in ...



Contact Us

For catalog requests, pricing, or partnerships, please visit:
<https://www.espay.es>

