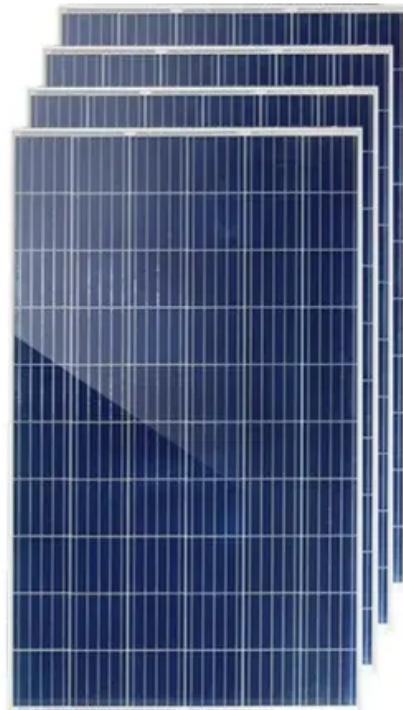


**Espay Solar Energy S.L.**

# **Glass photovoltaic panel greenhouse steel structure**



## Glass photovoltaic panel greenhouse steel structure

---



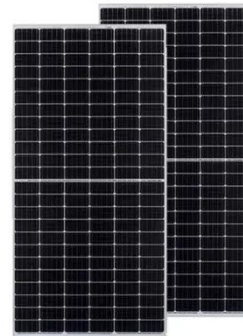
### Photothermal performance of glass greenhouse envelope structures ...

Filling greenhouse envelopes with nanofluids and using spectral splitting improves insulation, boosting crop yields. This study built scaled-down glasshouse models with dynamic ...

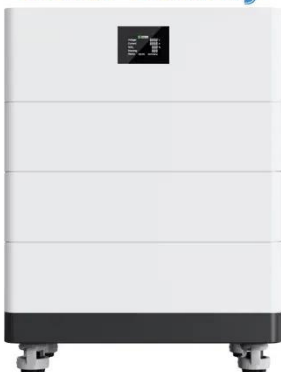
---

### 10 Popular Steel Structure Designs for PV Panel Projects

Compare 10 steel structure designs for PV panel projects. Find the best Steel Structure for PV Panel based on cost, durability, and site needs.



### High Voltage Solar Battery



### Advanced Glass Solar Greenhouse with Heavy Duty Steel Structure

The Solar Greenhouse features a sturdy structure integrated with solar panels that harness renewable energy for heating and electricity. Its excellent insulation and weather-resistant design provide a ...

---

### Glass Photovoltaic Panel

## Greenhouse Steel Structure: The Future of

The marriage of glass photovoltaic panels and greenhouse steel structures creates sustainable ecosystems benefiting both agriculture and energy production. With advancing technology and ...



## Glass photovoltaic panel greenhouse steel structure

This article aims to demonstrate the technical, economic and environmental feasibility of a greenhouse in which semi-transparent amorphous silicon (a-Si) PV glass panels are integrated on the entire ...

## Glass Photovoltaic Greenhouses

Our greenhouse frames, made of hot-dip galvanized steel, are renowned for their strength and durability. Designed and manufactured in-house, our frames are specifically engineered to maximize light ...



## Solar Panel Glass Greenhouse

High quality hot-dip galvanized steel structure, Zinc-coating 275g/m<sup>2</sup>, service life over 20 years. All steel materials are field-assembled, no secondary

CE UN38.3 MSDS



processing required. The galvanized connectors ...

## BiPV Solar Glass for Greenhouses , Heliene

Specially designed BiPV solar glass modules for greenhouses, Heliene's Greenhouse Integrated PV (GiPV) modules offer a sustainable alternative with no additional racking or support required.



## Glass And Galvanized Structure Steel

With amenities like versatility, structural strength and energy efficiency, integrating glass and galvanized steel establishes optimally designed greenhouses suitable for any climate or crop.

## The Complete Guide to Building a Solar-Powered Greenhouse

Build your own solar-powered greenhouse with this complete guide

covering site planning, structure selection, solar options, and year-round growing strategies.



---

## Contact Us

---

For catalog requests, pricing, or partnerships, please visit:  
<https://www.espay.es>

