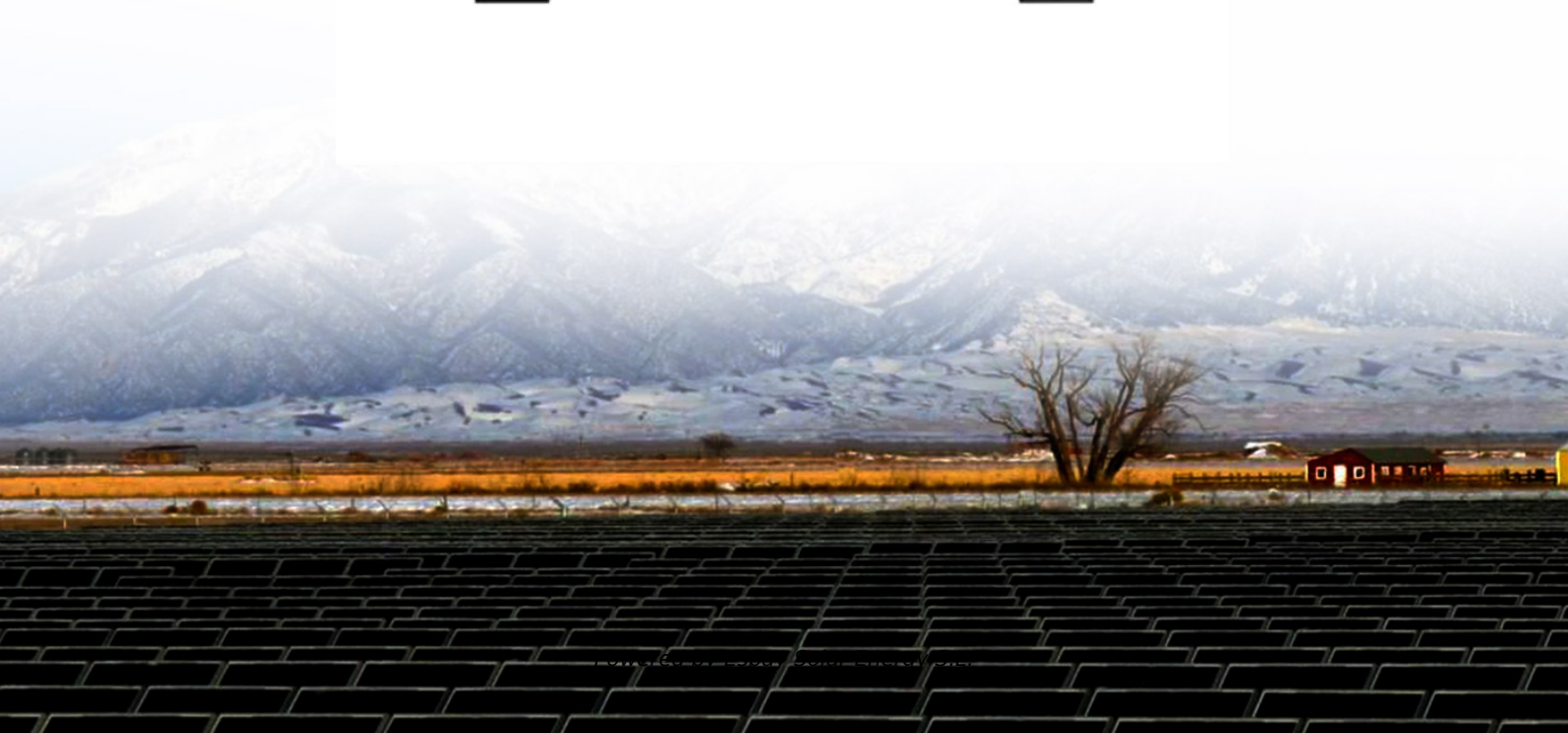


Espay Solar Energy S.L.

How big a battery should I use for a 12v 50 watt solar panel



Overview

Quick answer: For a 100Ah 12V battery, use a 200W solar panel for 5-8 hour charge time in full sun. General sizing rule: 50Ah needs 100W, 100Ah needs 200W, 200Ah needs 400W. Use the calculator above to get exact sizing for your battery. To determine the right size solar panel for charging a 12V battery, the key is to match the panel's output to your battery's capacity and your desired recharge time, while accounting for real-world conditions. The following table provides a clear and concise guide. For simple battery maintenance only, 10-30W is often enough. Various factors, such as battery capacity, sunlight availability, and charging speed, affect the selection of the optimal panel size.

How big a battery should I use for a 12v 50 watt solar panel



What Size Solar Panel Do I Need to Charge a 12v Battery?

To determine the right size solar panel for charging a 12V battery, the key is to match the panel's output to your battery's capacity and your desired recharge time, while accounting for real-world conditions.

What Size Solar Panel is Needed to Charge a 12V Battery Efficiently?

To charge a 12V battery, choose a solar panel rated for at least 75 to 100 watts for a 50Ah lithium battery. A flexible 100W panel can recharge it fully in about 10 hours with optimal ...



What Size Solar Panel Do You Need for 12V Battery Charging?

Learn how to size solar panels for 12V batteries with our expert guide. From RVs to off-grid cabins, get accurate sizing calculations and discover why custom panels outperform standard options.



What Size Solar Panel to Charge a

12V Battery (Wattage Guide)

Find the right solar panel size to charge a 12V battery using simple formulas, tables, and real examples for 50Ah-200Ah setups.



50 Watt Solar Panel To Charge 12v Battery (Everything To Know)

Now let's dive deep into what things you should keep in mind when charging a 12v battery with 50-watt solar panels, also I'll share a chart with different sizes of 12v batteries and how many ...

Best Battery For 50 Watt Solar Panel [Updated: February 2026]

When comparing different best battery for 50 watt solar panel options, this model stands out for its quality. What I appreciated most was the adjustable mounting bracket, allowing me to set ...



50 Watt Solar Panel To Charge 12v Battery (Everything To Know)

How Long Will A 50-Watt Solar Panel Take to Charge A 12V Battery? Don't Use Batteries Instead Use This! What Size Gauge Wire & Charge Controller For 50W



Solar Panel? Here's a chart on how long will a 50-watt solar panel will take to charge any size 12v battery in peak sun hours Conclusion 1. 50-watt solar panel would take around 5-20 peak sun hours to charge most of the 12v lead-acid battery from 50% depth of discharge 2. 50-watt solar panel would take around 10-40 peak sun hours to charge most of the 1... See more on dotwatts gridovaliving

What Size Solar Panel for 12V Battery: 50Ah-200Ah

...

Quick answer: For a 100Ah 12V battery, use a 200W solar panel for 5-8 hour charge time in full sun. General sizing rule: 50Ah needs 100W, 100Ah needs ...

What Size Solar Panel for 12V Battery: A Complete Guide to ...

Choose Panel Size Wisely: For small applications, a 50-100W solar panel is typically sufficient, while larger setups may require panels ranging from 150-300W for optimal performance.



Solar Panel Size Calculator for 12V Battery Charging

Use our Solar Panel Size Calculator to determine the perfect panel for charging your 12V battery. Input capacity, voltage, and sun hours for results.

APPLICATION SCENARIOS



What Size Solar Panel for 12V Battery: 50Ah-200Ah Chart (2026)

Quick answer: For a 100Ah 12V battery, use a 200W solar panel for 5-8 hour charge time in full sun. General sizing rule: 50Ah needs 100W, 100Ah needs 200W, 200Ah needs 400W. Add 25-30% more ...



12v Battery for Solar Panel (Best Charge for Each Amp)

How big of a solar panel do I need to charge a 12v battery? For a 12v battery, you'll ideally need a panel of 200 watts to charge a 100ah battery -- the most common 12v battery size.

Contact Us

For catalog requests, pricing, or partnerships, please visit:
<https://www.espay.es>

