

Espay Solar Energy S.L.

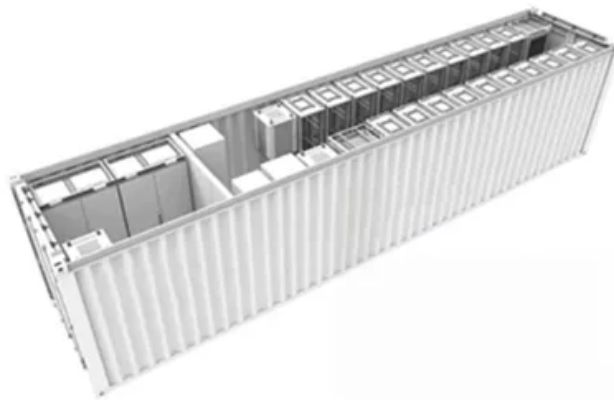
How big a solar panel should I use for a 45w water pump inverter



 **TAX FREE**

1-3MWh

BESS



How big a solar panel should I use for a 45w water pump inverter

What size solar panel is needed for a solar surface water pump?



51.2V 300AH

Selecting the right size of solar panels for your solar surface water pump is essential for optimal performance and cost - effectiveness. By considering factors such as pump power ...

How to calculate the number of solar panels for a water pump?

Then, match the panel output to the pump's input requirements. It's best to choose slightly larger solar panels than calculated to offset energy loss during conversion. For deep wells, consider pairing a ...



Solar Water Pump Sizing Calculator - 9to5 Equipment

What Is a Solar Water Pump Sizing Calculator? A solar water pump sizing calculator is an online tool that estimates: Pump power (Watts) -> how much energy your pump needs. Solar panel power ...

How Many Solar Panels Do You Need

to Run a Water Pump?

To run a water pump on solar, multiply the pump's power by 1.5 to calculate the total solar panel wattage needed. For example, a 1000W pump requires at least 1500W of solar panels. Use ...



Solar Water Pump Sizing Calculator

The Solar Water Pump Sizing Calculator is a tool designed to calculate the solar panel and battery requirements for a water pump. This calculator is particularly useful for individuals who rely on solar ...

What size solar panel do I need to run a water pump?

The size of the solar panel will vary depending on the pump that best fits your needs. The number of solar panels will depend on the wattage that a particular pump will need to operate, the phase type of ...



What Type of Solar Panel Do You Need for a Water Pump?

Selecting the right solar panel for your water pump can be a daunting task, especially with so many factors to

consider, like wattage, pump type, and sunlight availability. Choosing the wrong ...



How Many Solar Panels for a Solar Water Pump?

A standard 1 HP (horsepower) water pump typically requires between 800 to 1200 watts of solar panels. This usually translates to three 400W panels or twelve 100W panels.



How Big a Solar Panel Should You Use with a Water Pump? A ...

Summary: Selecting the right solar panel size for a water pump depends on factors like pump power, daily usage, and sunlight availability. This guide simplifies the calculations, provides real-world ...

Solar Water Pumps: The Ultimate Guide (Sizing, Cost

The definitive guide to solar water pumps. We cover how they work, how to size the right panels and pump for your

project, costs, and installation. Use our interactive calculator to design ...



Contact Us

For catalog requests, pricing, or partnerships, please visit:
<https://www.espay.es>

