

**Espay Solar Energy S.L.**

# **How big an inverter do I need for a 12v120A battery**



## Overview

---

Quick answer: Add up your daily watt-hours, double the figure for wiggle room, divide by 12 to get amp-hours, then double again if you plan to use only half the battery. That's the minimum size your 12V inverter deserves. Do you have a 12v inverter and need to find the right size battery?

At BatteryStuff. This new calculator combines our AC-to-DC Amperage Conversion Calculator and 12V Battery Run Time Calculator into a. Pairing a right size capacity battery for an inverter can be a bit confusing for most the beginners So I have made it easy for you, use the calculator below to calculate the battery size for 200 watt, 300 watt, 500 watt, 1000 watt, 2000 watt, 3000 watt, 5000-watt inverter Failed to calculate field. The Calculate Battery Size for Inverter Calculator helps you determine the optimal battery capacity needed to support your inverter system. By inputting critical parameters such as power consumption, inverter efficiency, and desired usage time, this calculator provides a precise battery size. Match the inverter's continuous wattage rating to the battery's discharge capacity. Factor in surge power needs but prioritize sustained loads.

## How big an inverter do I need for a 12v120A battery

---



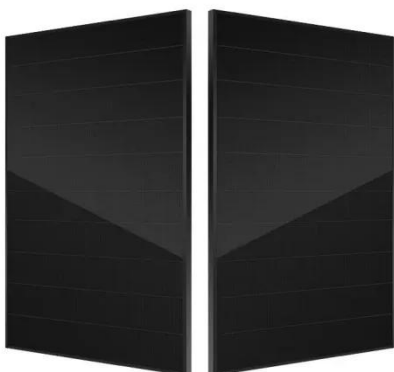
### Calculate Battery Size For Any Size Inverter (Using Our Calculator)

To recharge your battery from time to time you would need the right size solar panel to do the job! Read the below article to find out the suitable solar panel size for your battery bank

---

### How to Calculate Battery Size for Inverters of Any Size

In order to size a battery bank, we take the hours needed to continuously run your inverter and multiply them by the number of watts the inverter is designed for.



### How to Choose the Right Battery Size for Your 12V Inverter

Choosing the right battery size for your 12V inverter isn't rocket science--but it does require careful planning. Calculate your load, factor in efficiency losses, and consider future needs.

---

### What Size Inverter You Need (Calculations + Battery)

To ascertain the size of the inverter you need, you first need to know precisely how much power your devices require.



### **12v Inverter Battery Size Calculator**

Need to size a battery for your 12V inverter? Our 12v Inverter Battery Size calculator will help you determine the proper size battery!

### **How Much Battery Capacity Do You Need With a 12V Inverter?**

Discover how to calculate the ideal battery capacity for a 12V inverter using simple math, practical examples, and money-saving tips for daily power.



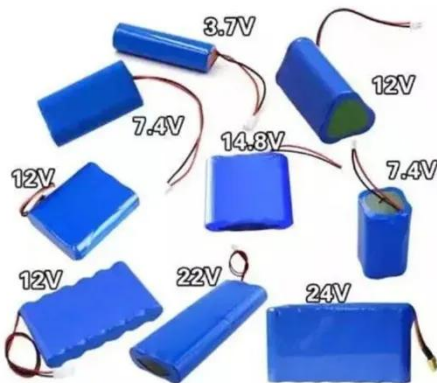
### **Calculate Battery Size For Any Size Inverter (Using Our Calculator)**

Calculate Battery Size for Inverter Calculator helps you determine the optimal battery capacity needed to support your inverter system.



## best sized inverter for 12 volt battery

Choosing the right inverter size for a 12-volt battery involves matching the inverter's power output with the power requirements of connected devices. When appropriately sized, this ensures ...



## How to Size and Pair a Battery with Your Inverter in 2025: Advanced

Learn how to size and pair a battery with your solar inverter in 2025. Discover key ratios, examples, and Growatt solutions for optimal solar + storage system design.

## Can an Inverter Be Too Big for Your Battery System?

Match the inverter's continuous wattage rating to the battery's discharge capacity. For a 12V 200Ah battery

(2.4kWh), a 2000W inverter is ideal.  
Formula: Inverter Wattage  $\leq$  (Battery  
Voltage  $\times$  Ah ...



---

## Contact Us

---

For catalog requests, pricing, or partnerships, please visit:  
<https://www.espay.es>

