

Espay Solar Energy S.L.

How big an inverter should I use for a 12 volt 50a battery



Overview

After hands-on testing and side-by-side comparison, I confidently recommend the BELTTT 2000W Pure Sine Wave Inverter as your best-sized inverter for a 12-volt battery—perfect when power quality and capacity really matter. Top Recommendation: BELTTT 2000W Pure Sine Wave Inverter, 12V. Pairing a right size capacity battery for an inverter can be a bit confusing for most the beginners So I have made it easy for you, use the calculator below to calculate the battery size for 200 watt, 300 watt, 500 watt, 1000 watt, 2000 watt, 3000 watt, 5000-watt inverter Failed to calculate field. Match the inverter's continuous wattage rating to the battery's discharge capacity. 4kWh), a 2000W inverter is ideal. Factor in surge power needs but prioritize sustained loads. Always check the battery's. An inverter needs to supply two needs: Peak or surge power, and the typical or usual power. Surge is the maximum power that the inverter can supply, usually for only a short time (usually no longer than a second unless specified in the inverter's specifications). By inputting critical parameters such as power consumption, inverter efficiency, and desired usage time, this calculator provides a precise battery size. But one of the most common questions in 2025 remains: How do you size and pair a battery with your inverter?

In this advanced guide, we'll expand on our earlier article, How to Choose the Right Solar Inverter for Your Home, by focusing specifically on battery integration. You'll learn how to. Quick answer: Add up your daily watt-hours, double the figure for wiggle room, divide by 12 to get amp-hours, then double again if you plan to use only half the battery. In this guide, we'll break that math into kid-simple steps, compare battery.

How big an inverter should I use for a 12 volt 50a battery

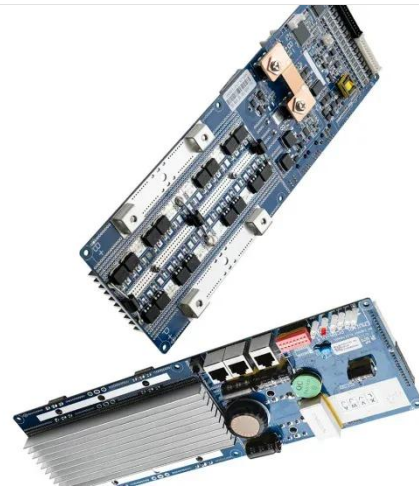


Careers , Bjarke Ingels Group

BIG has grown globally since 2005, with 60+ buildings in 10+ countries. Join our 700+ person team shaping the future of architecture and design challenges.

best sized inverter for 12 volt battery

After hands-on testing and side-by-side comparison, I confidently recommend the BELTTT 2000W Pure Sine Wave Inverter as your best-sized inverter for a 12-volt battery--perfect when ...



People , Bjarke Ingels Group

Meet the team at Bjarke Ingels Group (BIG). Explore our partners, architects, and specialists shaping the future of architecture and design.

The Plus , Bjarke Ingels Group

Bjarke Ingels - Founder & Creative Director, BIG From all four sides of the buildings, visitors and staff will be invited to hike around the facility and end their walk on the roof.



How to Choose the Right Battery Size for Your 12V Inverter

Choosing the right battery size for your 12V inverter isn't rocket science--but it does require careful planning. Calculate your load, factor in efficiency losses, and consider future needs.

Jinji Lake Pavilion , Bjarke Ingels Group

Like a little sister to the Suzhou Museum of Contemporary Art, the Jinji Lake Pavilion seeks to reimagine the future architecture and landscape of the Lake District rooted in the rich heritage of Suzhou's ...



Calculate Battery Size For Any Size Inverter (Using Our Calculator)

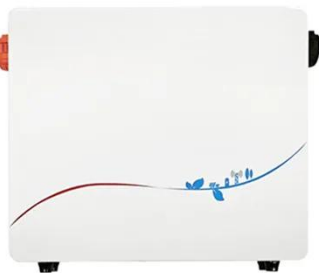
To recharge your battery from time to time you would need the right size solar panel to do the job! Read the below

article to find out the suitable solar panel size for your battery bank



Google Bay View , Bjarke Ingels Group

All in all, a campus where front of house and back of house, technology and architecture, and form and function have been fused into a new and striking hybrid." Bjarke Ingels - Founder & Creative Director, ...



How Much Battery Capacity Do You Need With a 12V Inverter?

Quick answer: Add up your daily watt-hours, double the figure for wiggle room, divide by 12 to get amp-hours, then double again if you plan to use only half the battery. That's the minimum ...

Hamburg State Opera , Bjarke Ingels Group

Shaped by the movement of the water, the surrounding park is designed by BIG Landscape and manages storm surges

through sloping terraces, vegetated dunes, and wetland gardens that slow ...



BIG , Bjarke Ingels Group

BIG (Bjarke Ingels Group) is a multidisciplinary design firm specializing in architecture, engineering, and planning with a focus on innovative and sustainable projects.

Calculate Battery Size for Inverter Calculator

Calculate Battery Size for Inverter Calculator helps you determine the optimal battery capacity needed to support your inverter system.



BIG HQ , Bjarke Ingels Group

At the foot of BIG HQ, BIG's Landscape team has transformed a former parking area into a 1,500 m² public park and promenade, inspired by the sandy beaches and the coastal forests of

Denmark.



Determining the Solar and Inverter Size Needed to Charge a Battery

If your inverter is underpowered, it may not handle your load. This guide will walk you through everything you need to know to calculate the optimal Size of your solar and inverter setup to ...



- Voltage range: 691.2-947.2V
- >6000 cycles (100%DOD)
- Rated battery capacity: 216KWH (customizable)
- EMS communication: 4G/CAN/RS485



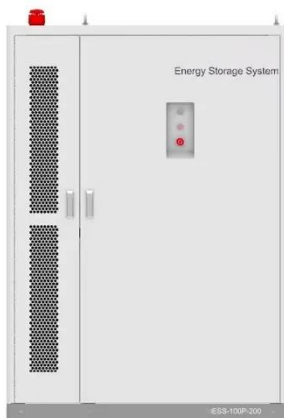
CityWave , Bjarke Ingels Group

Designed by BIG-Bjarke Ingels Group with Atelier Verticale, CityWave is constructed on the last two plots of the CityLife masterplan, a major new business district in a prestigious area of Milan, within ...

Can an Inverter Be Too Big for Your Battery System?

Match the inverter's continuous wattage rating to the battery's discharge capacity. For a 12V 200Ah battery (2.4kWh), a 2000W inverter is ideal.

Formula: Inverter Wattage \leq (Battery Voltage \times Ah ...



BIG , Bjarke Ingels Group

Our latest transformation is the BIG LEAP: Bjarke Ingels Group of Landscape, Engineering, Architecture, Planning and Products. A plethora of in-house perspectives allows us to ...

Battery and Inverter Sizing Guide 2025: How to Match Solar Storage

Learn how to size and pair a battery with your solar inverter in 2025. Discover key ratios, examples, and Growatt solutions for optimal solar + storage system design.



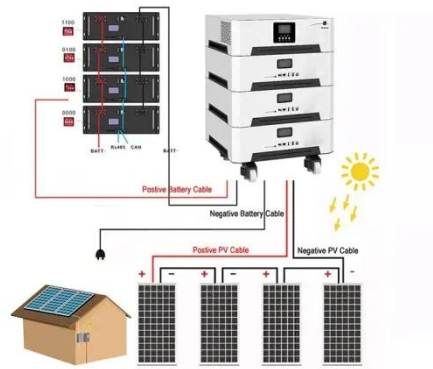
What Size Inverter Do I Need?

Finding the proper inverter size for your needs is as simple as adding together the necessary wattages of the items that you're looking to power.



The Only Inverter Size Chart You'll Ever Need

During our research, we discovered that most inverters range in size from 300 watts up to over 3000 watts. In this article, we guide you through the different inverter sizes. Additionally, you'll ...



Contact Us

For catalog requests, pricing, or partnerships, please visit:
<https://www.espay.es>

