

Espay Solar Energy S.L.

How many meters long and wide is a photovoltaic panel



Overview

Most modern residential panels, often referred to as 60-cell modules, measure approximately 5.25 feet wide (66 inches by 39 inches or 1.7m by 0.99m). There is no standardized chart that will tell you, for example, “A typical 300-watt solar panel is this long and this wide.” If you want to calculate how many solar panels you can put on your roof, you will obviously need to know the size of a solar panel. Example: 5kW solar system is comprised of. Panel “Size” vs Physical Dimensions: The most critical distinction for homeowners is that solar panel “size” refers to electrical output (measured in watts), not physical measurements. A 400W panel has the same physical footprint whether it produces 350W or 450W – the difference lies in cell. How long and wide is the solar panel?

1. However, dimensions may vary based on technology and manufacturer specifics. 65m) and 79 inches (2m), their width is between 39 and 41 inches (around 1m).

How many meters long and wide is a photovoltaic panel

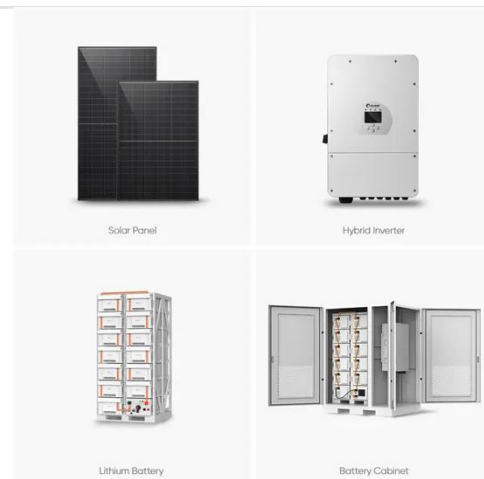


standard solar photovoltaic panel sizes explained

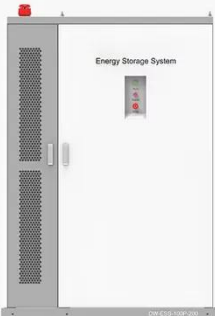
The standard residential solar photovoltaic panel size you'll see most often is based on a 60-cell configuration, typically measuring about 67 inches long by 40 inches wide. This size offers the ...





How Big Is A Solar Panel In Meters?

This guide explores the standard sizes of residential and commercial solar panels, how panel size relates to wattage and efficiency, and the factors influencing solar panel layout and ...



PRODUCT INFORMATION



-  **BATTERY CAPACITY**
50kWh-500kWh
-  **DC VOLTAGE RANGE**
400V-1000V
-  **DEGREE OF PROTECTION**
IP54
-  **OPERATING TEMPERATURE RANGE**
-10-50°C

Standard Solar Panel Sizes And Wattages (100W-500W Dimensions)

Whenever you want to find out what the standard solar panel sizes and wattages are, you encounter a big problem: There is no standardized chart that will tell you, for example, "A typical 300-watt solar ...

How Big Are Solar Panels? Typical Dimensions Explained

Most modern residential panels, often referred to as 60-cell modules, measure approximately 5.5 feet long by 3.25 feet wide (66 inches by 39 inches or 1.68 meters by 0.99 meters).



Solar Panel Size Guide , Best Panel Size for Your Roof

Solar cells are assembled in grids, and the most common configurations are 60-cell panels for residential use and 72-cell panels for commercial or utility use. A 60-cell panel (often seen on ...

How long and wide is the solar panel?

Typically, solar panels measure about 1.65 meters by 1 meter, which translates to an area of around 1.7 square meters. However, dimensions may vary based on technology and manufacturer ...



Average dimensions of photovoltaic panels

Generally speaking, the length of residential solar panels is between 65 inches (1.65 meters) and 79 inches (2 meters). Their width is between 39 and

41 inches (around 1 meter).



How Big is a Solar Panel? The Solar Panel Size Guide

For a residential solar panel, size is fairly consistent across manufacturers: 65 inches (1.65 meters) by 39 inches (1 meter) is the average solar panel size that you find on the roofs of houses. That is about ...



How Big Is A Solar Panel? A Guide To The Different

In general, the length of residential solar panels is usually between 65 inches (1.65m) and 79 inches (2m), their width is between 39 and 41 inches (around 1m). The area of a residential solar ...

Solar Panel Size & Dimensions Guide 2025 , Complete Specs

Complete guide to solar panel sizes and dimensions. Compare 60-cell vs 72-cell panels, weights, roof space

requirements, and installation specs for 2025.



Contact Us

For catalog requests, pricing, or partnerships, please visit:
<https://www.espay.es>

