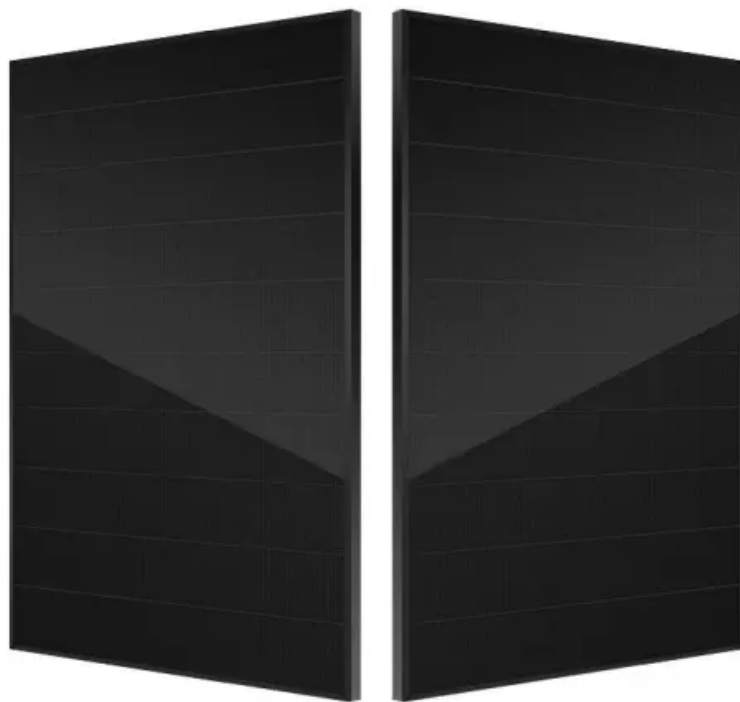


Espay Solar Energy S.L.

How many square meters are there for 1kv solar power generation



How many square meters are there for 1kv solar power generation



Solar Energy Generation Per Square Metre: A Complete Guide

In this guide, we'll explore how much solar power can be harnessed per square metre, how solar panels work, the factors that impact their efficiency, and the home solar system cost.

How much area is required for a 1 kW rooftop solar PV system?

So, we can say that approximately 10 sq m or 100 sq ft shade-free area is needed for the generation of 1kW power. This again depends on the solar panel's efficiency.



How many square meters does solar power generate? , NenPower

Therefore, a home needing around 8,000 kWh per year would require approximately 11.5 to 15 square meters of roof space for solar panels, depending on the chosen technology's efficiency.

How Much Area Required for 1kW Solar Plant?

Knowing the size of a 1kW solar panel in terms of energy generation and dimensions is crucial. Each panel has an area of about 1.6-1.8 square meters, thereby implying that the area required for 1kW ...



How many square meters of space is required per kw solar panel?

Typical solar panels range from 250W to 400W, translating to an area of about 1.6 to 2.2 square meters per panel, leading to a total space requirement of around 5 to 10 square meters for 1 kW.

Solar Power Per Square Meter Calculator

Estimate your solar energy production per m² with accurate calculations for any location. Free calculator with multiple units, efficiency modes, and detailed visualizations. This calculator provides estimates ...



Solar Panel Output Per Square Meter

Discover how much electricity solar panels generate per square meter, explore efficiency factors, technology

comparisons, and future innovations in photovoltaic energy.



How Many m² Are Needed for 1 kW of Solar Panels?

How Many m² Are Needed for 1 kW of Solar Panels? For a 1 kW solar energy system, an average area of 6 to 8 m² is required. This calculation may vary depending on panel efficiency, the ...



How many square meters are there for 1kw solar power generation

The average solar panel has an input rate of roughly 1000 Watts per square meter, while the majority of solar panels on the market have an input rate of around 15-20 percent.



Area Required for Solar PV Power Plants

A simple rule of thumb is to take 100 sqft for every 1kW of solar panels. Extrapolating this, a 1 MW solar PV power plant should require about

100000 sqft (about 2.5 acres, or 1 hectare).

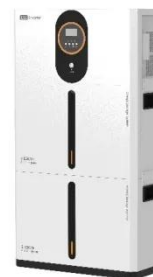


Area Required for Solar PV Power Plants

Final Summary: 1 kW of solar panels require approximately 100 sqft, or 10 sqm., when used on rooftops and in small ground mounted installations. Thank you note: This article had an error ...

1kW Solar Panel Size

Required Roof Space: A typical 1kW solar panel system requires approximately 6.4 square meters of roof space. Panel Layout: Ensure the roof can accommodate the layout of 3 to 4 panels, ...



area required per kW of solar panels

On average, a 1 kW solar panel system will require between 80 to 100 square feet (7.5 to 9.5 square meters). This

means, for every kilowatt of ...



Contact Us

For catalog requests, pricing, or partnerships, please visit:
<https://www.espay.es>

