

Espay Solar Energy S.L.

How much does the photovoltaic panel tiling effect affect



Overview

The tilt angle of solar panels plays a crucial role in their efficiency, significantly impacting energy production. So, How Much Does Angle *Really* Affect Efficiency?

Factors Beyond Tilt: What Else Impacts Your Panel's Performance?

Getting the angle right can be the difference between a good solar investment. Explore the link between panel tilt angle and PV efficiency and how small changes can deliver significant solar gains with RatedPower software - read more! Industrial engineer specialised in renewable energies, with a master's degree in industrial engineering. Irene joined RatedPower more than two. Completing a simple calculation on the free software SAM (System Advisor Model) provided by NREL (National Renewable Energy Laboratory), the sample 3. In this comprehensive guide, discover how to calculate the ideal angle to maximize your energy savings and system performance.

How much does the photovoltaic panel tilting effect affect



Understanding PV System Losses, Part 4: Solar Panel Tilt, Solar

As a rule of thumb, placing panels at a tilt equal to the latitude of the installation and facing towards the equator will maximize the amount of incident irradiance on the panels over the course of the year.

How does the tilt angle of solar panels affect energy output, and how

The angle at which solar panels are positioned relative to the sun's rays can either maximize or minimize the amount of solar energy captured, affecting the overall efficiency and return ...



How does the angle of solar panels affect their efficiency

Efficiency gains from optimal tilt adjustment generally range from 5% to 20% over flat or poorly tilted panels, depending on location. Seasonal adjustment can further improve output but is ...



How Much Does Tilt Angle Affect Solar Panels?

The effect of tilt angle on solar panel performance is substantial. A study conducted by the National Renewable Energy Laboratory (NREL) found that optimizing tilt angle can increase annual

...



How the Angle Affects Solar Panels Efficiency

While the exact percentage varies based on your geographic location, improperly angled panels can lose anywhere from 10% to 25% of their potential energy output over a year. This is a substantial

...

Effect of tilt angle on the performance and electrical parameters of a

Photovoltaic (PV) system's performance is significantly affected by its orientation and tilt angle. Experimental investigation (indoor and outdoor) has been carried out to trace the variation in ...



How solar panel tilt angle affects PV plant performance

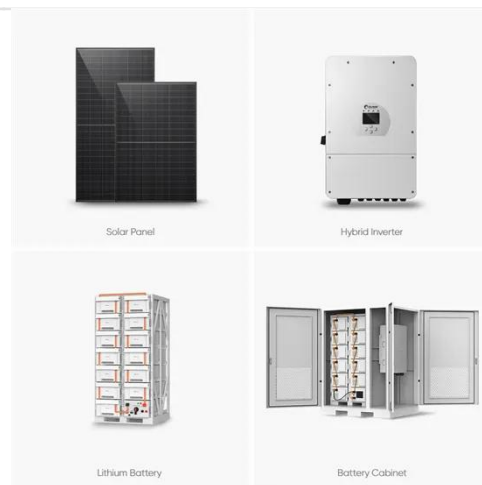
The vertical tilt, or angle, at which the solar panels are installed in a

photovoltaic (PV) system will have an impact on the amount of electricity they can generate.



Solar Array Tilt Angle and Energy Output

The effect of an array's tilt angle on solar PV energy output may be up to 20% compared to that of flat installations. A comparison of data in two US cities has been completed to exhibit the importance of a ...



Solar Panel Tilt Angle Calculation: Complete Guide 2025

The tilt angle directly influences how much solar radiation your photovoltaic panels capture throughout the year. Panels positioned perpendicular to the sun's rays absorb maximum energy, but the sun's ...

What's the Best Angle for Solar Panels to Get Maximum Output?

Across the continental U.S., the optimal

tilt can range from 30-45 degrees. However, the further north you live, the more orientation can affect solar panel efficiency. For example, ...



Contact Us

For catalog requests, pricing, or partnerships, please visit:
<https://www.espay.es>

