

**Espay Solar Energy S.L.**

# **How much electricity does 1 kilowatt of wind power generate**



## Overview

---

5 m/s, giving an average power output of 900W (from power curve). Average wind speed is about 6. However, there's no black-and-white answer to how much energy a wind turbine produces, as energy output varies depending on. Most turbines automatically shut down when wind speeds reach about 88. This reduces electricity production when high winds occur and people need continuous power from the wind. electricity generation from wind energy increased from about 6 billion kilowatthours (kWh) in 2000 to about 434 billion kWh in 2022. utility-scale electricity generation. Now we explain daily, yearly, and lifetime output, compare onshore and offshore turbines, and highlight efficiency, capacity factors, and real U. From my experience managing utility-scale wind projects, I've consistently observed that site-specific factors—such as average wind.

## How much electricity does 1 kilowatt of wind power generate

---

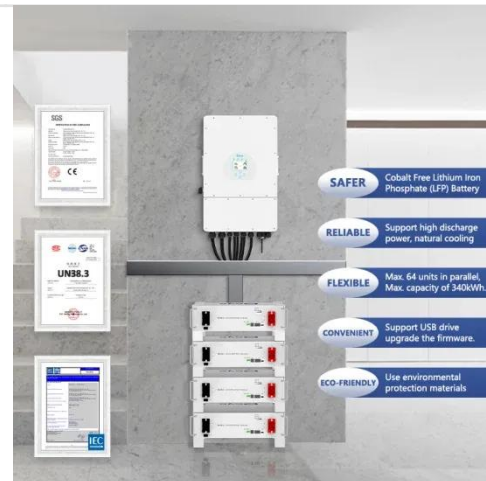


### How Much Power Does A Wind Turbine Generate?

Just because a wind turbine has a capacity rating of 1.5 megawatts, that doesn't mean it will produce that much power in practice. Wind turbines commonly produce considerably less than ...

### How Much Energy Does a Wind Turbine Produce?

U.S. wind turbines produce about 434 billion kilowatts (kWh) of electricity a year, and it only takes an average of 26 kWh of energy to power an entire home for a day.



### How Much Energy Does A Wind Turbine Produce?

A small wind turbine can cost between \$3,000 and \$5,000 per kW rated power fully installed (American Wind Energy Association). Most homeowners using wind as a primary source of ...

### How Much Electricity Is Generated

## By A Single Wind Turbine

The energy generated from a single rotation of a wind turbine operating at optimal speed can range between 1 to 4 kWh, depending on the size of the turbine and the wind.

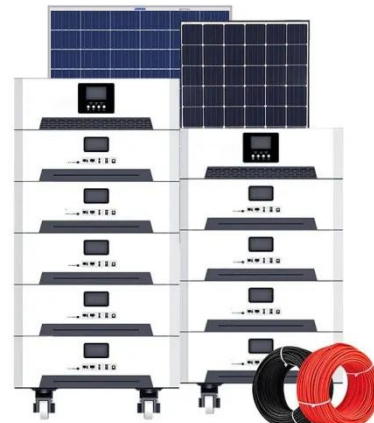


## How Much Energy Does a Wind Turbine Generate

A 10 kW turbine, for instance, can generate around 16,000 to 25,000 kWh annually depending on wind conditions. In one rural project I monitored, a cluster of 20 kW turbines supported ...

## How Much Energy does a Wind Turbine Generate?

Most onshore wind turbines have a capacity of 2-3 megawatts (MW), which can produce 6 million kilowatt hours (kWh) of electricity every year. Enough to power around 1,500 average ...



## Wind Energy Factsheet

Wind could provide 20% of U.S. electricity by 2030 and 35% by 2050. 11 Five of the eight Great Lakes states have offshore wind energy potentials that exceed their annual electricity demand

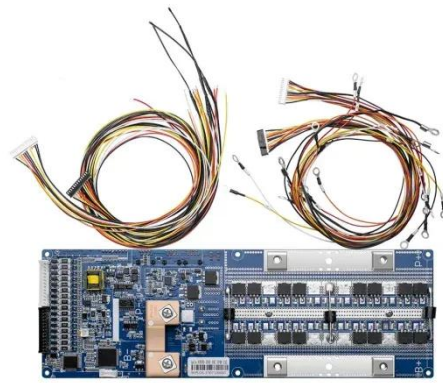
(MI, WI, NY, ...



## Electricity generation from wind

In 2022, wind turbines were the source of about 10.3% of total U.S. utility-scale electricity generation. Utility scale includes facilities with at least one megawatt (1,000 kilowatts) of electricity

...



## Power Generated by One Wind Turbine: How Much Electricity One

...

Learn how much power generated by one wind turbine really is, from daily and yearly output to homes powered and real U.S. wind energy facts.



## How Much Electricity Does a Wind Turbine Produce?

On average, a single wind turbine produces over 6 million kilowatt-hours of electricity annually, which is enough to power around 1,500 households for a

year. This turbine annual ...



---

## Contact Us

For catalog requests, pricing, or partnerships, please visit:  
<https://www.espay.es>

