

Espay Solar Energy S.L.

How much electricity does a solar panel generate per square meter



How much electricity does a solar panel generate per square meter

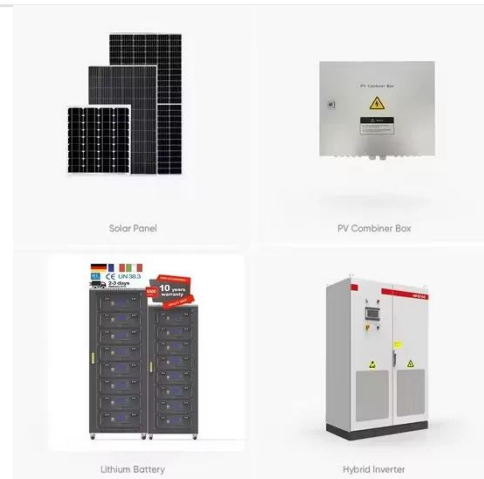


How Much Electricity Does 1 m² of Solar Panel Produce?

As panel efficiency increases, the amount of power generated from the same surface area also increases. The difference between an 18% efficiency panel and a 22% efficiency panel is roughly 40 watts ...

Solar Panel Watts Per Square Meter Explained

To measure this efficiency, use solar panel Watts per square meter (W/m). This metric shows how much power a solar panel produces per square meter of surface area under standard conditions. By knowing W/m, you ...



How Much Energy Does A Solar Panel Produce?

If you're thinking about going solar, one of your biggest questions is likely: how much electricity can a solar panel actually produce? This in-depth guide breaks down the numbers, the factors that influence ...

How Much Power Does 1 Square Meter of Photovoltaic Panels Generate

Solar energy is reshaping how we power homes and businesses, but many wonder: how much electricity can a single square meter of photovoltaic panels realistically produce each year? Let's break down the science, ...




How Much Energy Does a Solar Panel Produce: Output ...

How much energy does a solar panel produce? Get clear, real-world output numbers per day, month, and square meter - no hype, just facts.

Solar Power per Square Meter Calculator

Power of Panel (Watt Peak): Solar panels are marked with watt peak (Wp), and this is the amount of output the panels should produce in ideal conditions. Your solar panel will give more output if it ...



-  **Efficient Higher Revenue**
 - Max. Efficiency 97.5%
 - Max. PV Input Voltage 600V
 - 1200W Peak Output Power
 - 2 MPPT Trackers, 100% DC Input Overvoltage
 - Max. PV Input Current 15A, Compatible with High Power Modules
-  **Intelligent Simple O&M**
 - IP66 Protection Degree: support outdoor installation
 - Smart I-V Curve Diagnosis Function: locate PV string faults accurately and automatically detect faults
 - DC & AC Type II SPD: prevent lightning damage
 - Battery Reverse Connection Protection
-  **Flexible Abundant Configuration**
 - Plug & Play, EPS Switching Under 30ms
 - Compatible with Lead-acid and Lithium Batteries
 - Max. 6 Units Inverters Parallel
 - AFCI Function (Optional): when an arc fault is detected the inverter immediately stops operation

Solar Panel Output Per Square Meter

Discover how much electricity solar panels generate per square meter, explore efficiency factors, technology



comparisons, and future innovations in photovoltaic energy.

How much does solar energy generate per square meter?

Solar energy generation per square meter can vary significantly, but typical values indicate that 1 square meter of solar panels can produce between 150 to 400 watts of electricity under optimal conditions. ...



Solar Power Per Square Meter Calculator

Calculate solar panel energy output per square meter. Get accurate daily, monthly, and annual production estimates based on location, panel specs, and system losses.

Solar Energy Per Square Meter: How Much Power Can You Get?

This article explores solar energy per square meter and the various factors that influence energy output, such as

location, climate, and panel efficiency. It provides crucial calculations, compares energy ...



Contact Us

For catalog requests, pricing, or partnerships, please visit:
<https://www.espay.es>

