

Espay Solar Energy S.L.

How much gas does a solar panel use



Overview

A 400-watt panel can generate roughly 1.5 kWh of energy per day, depending on local sunlight. household's 900 kWh/month consumption, you typically need 12–18 panels. Output depends on sun hours, roof direction, panel technology, shading, temperature and. Solar energy technologies and power plants do not produce air pollution or greenhouse gases when operating. Using solar energy can have a positive, indirect effect on the environment when solar energy replaces or reduces the use of other energy sources that have larger effects on the environment. Residential solar panels emit around 41 grams of CO₂ equivalent emissions per kilowatt-hour of electricity generated, with most of these emissions tied to the manufacturing process. Utility-scale solar. Solar energy can be harnessed two primary ways: photovoltaics (PVs) are semiconductors that generate electricity directly from sunlight, while solar thermal technologies use sunlight to heat water for domestic uses, to warm buildings, or heat fluids to drive electricity-generating turbines.

How much gas does a solar panel use



How Much Energy Does A Solar Panel Produce?

If you're thinking about going solar, one of your biggest questions is likely: how much electricity can a solar panel actually produce? This in-depth guide breaks down the numbers, the ...

Calculating energy required to produce a solar panel vs the

Calculating energy required to produce a solar panel vs the production of that panel. I want to take a moment and go over an estimation of how much energy it costs to make a PV panel. There is a lot of ...

Utility-Scale ESS solutions



Solar energy and the environment

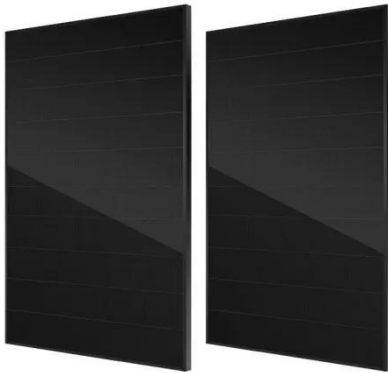
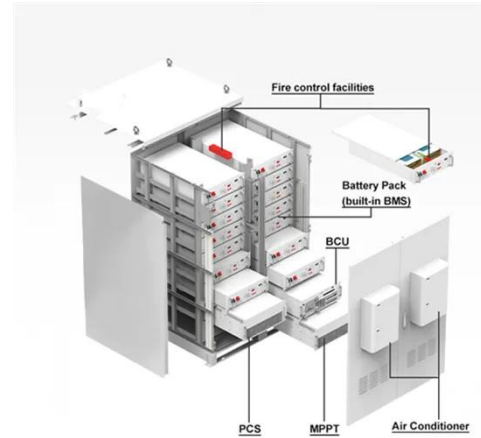
Solar energy technologies and power plants do not produce air pollution or greenhouse gases when operating. Using solar energy can have a positive, indirect effect on the environment when solar ...



What Is The Carbon Footprint Of

Solar Panels?

How Much Carbon Dioxide Does A Solar Panel Produce? According to the Intergovernmental Panel on Climate Change (IPCC), solar panels produce lifecycle carbon dioxide emissions of about 40g ...



How Much Water Do Solar Panels Use vs. Fossil Fuels?

As we navigate the complex landscape of energy production and its environmental impact, one fact remains crystal clear: solar panels, while they still do require some water usage, are undeniably ...

What is the Carbon Footprint of Solar Panels? , Solar

According to the IPCC, the carbon footprint of rooftop solar panels is roughly 12 times less than natural gas and 20 times less than coal, in terms of CO2 emissions per kWh of electricity ...



Solar PV Energy Factsheet

Solar energy can be harnessed two primary ways: photovoltaics (PVs) are semiconductors that generate electricity directly from sunlight, while solar

thermal technologies use sunlight to heat water for ...



If a solar plant uses natural gas, is it still green?

The giant Ivanpah solar power plant in the California Mojave Desert recently detailed how much natural gas it burned to generate power when the sun wasn't sufficient - the equivalent to



How Much Greenhouse Gases Are Produced By Solar Panels

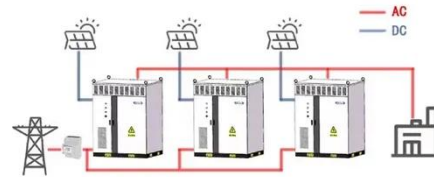
Residential solar panels emit around 41 grams of CO2 equivalent emissions per kilowatt-hour of electricity generated, with most of these emissions tied to the manufacturing process. These ...

DOE Explains Solar Fuels

Solar fuels could diversify our fuel supply and increase the sustainability of our overall energy system. They could also use existing fuel infrastructure for a huge range of applications. These fuels

could be ...

WORKING PRINCIPLE



Contact Us

For catalog requests, pricing, or partnerships, please visit:
<https://www.espay.es>

