

**Espay Solar Energy S.L.**

# **How much is the output value of energy storage power stations**



## Overview

---

When asking, "How many watts does a centralized energy storage power station have?"

" the answer depends on its design and application. These systems typically range from 1 megawatt (MW) to over 500 MW, with capacity tailored to grid demands, renewable energy integration, or. How is the output value of energy storage power station?"

1. Investors could adjust their evaluation approach to get a true estimate—improving profitability and supporting sustainability goals. Get data-driven insights for industrial and renewable applications. Understanding Energy Consumption in Storage Power Stations. An energy storage system (ESS) for electricity generation uses electricity (or some other energy source, such as solar-thermal energy) to charge an energy storage system or device, which is discharged to supply (generate) electricity when needed at desired levels and quality. ESSs provide a variety. Global electricity output is set to grow by 50 percent by mid-century, relative to 2022 levels. With renewable sources expected to account for the largest share of electricity generation worldwide in the coming decades, energy storage will play a significant role in maintaining the balance between. But as the scale of energy storage capacity continues to expand, the drawbacks of energy storage power stations are gradually exposed: high costs, difficult to recover, and other issues.

## How much is the output value of energy storage power stations



### Global energy storage

The global battery industry has been gaining momentum over the last few years, and investments in battery storage and power grids surpassed 450 billion U.S. dollars in 2024.

### How much electricity does the energy storage station provide?

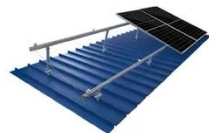
Energy storage stations play a significant role in the integration of renewable energy sources by providing essential support for intermittent generation. They enable the accumulation of ...



TILE ROOF SOLAR MOUNTING SYATEM



STANDING SEAM ROOF SYATEM



ADJUSTABLE TILT FLAT ROOF SYATEM



TRIANGLE FLAT ROOF SYATEM

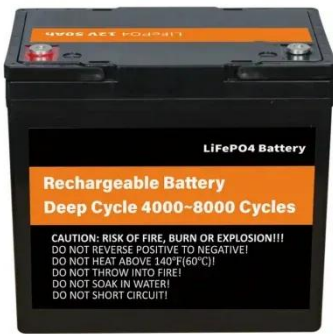
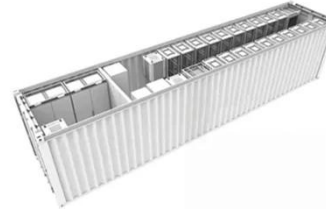


### Evaluating energy storage tech revenue potential , McKinsey

While energy storage is already being deployed to support grids across major power markets, new McKinsey analysis suggests investors often underestimate the value of energy storage ...

### The Economic Value of Independent Energy Storage Power Stations ...

This article establishes a full life cycle cost and benefit model for independent energy storage power stations based on relevant policies, current status of the power system, and trading ...



### How Much Electricity Does an Energy Storage Power Station ...

Energy storage systems (ESS) are revolutionizing how we manage electricity, but a common question persists: "How much power do these stations actually use?" Let's break it down.

### How is the output value of energy storage power station?

How is the output value of energy storage power station? 1. The output value of energy storage power stations is determined by factors like their capacity, efficiency, energy market prices, ...



### Understanding the Power Capacity of Centralized Energy Storage ...

Meta Description: Discover how many watts a centralized energy storage power station typically has, explore

industry applications, and learn why megawatt-scale systems are transforming renewable ...



---

### **Energy storage for electricity generation**

Gross generation reflects the actual amount of electricity supplied by the storage system. Net generation is gross generation minus electricity used to recharge the storage system and the electricity ...



---

### **A comprehensive review of the impacts of energy storage on power**

This manuscript illustrates that energy storage can promote renewable energy investments, reduce the risk of price surges in electricity markets, and enhance the security of ...



---

### **An energy storage allocation method for renewable energy stations ...**

(1) For renewable energy power stations

with different installed sizes, the planned output curve after energy storage allocation is used to characterize the deviation between the combined ...



 LFP 280Ah C&I

---

## Contact Us

For catalog requests, pricing, or partnerships, please visit:  
<https://www.espay.es>

