

Espay Solar Energy S.L.

How to block the opening of photovoltaic panels



Overview

To block the open tube of a solar panel effectively, the strategies involve 1. applying physical barriers, 2. maintaining proper maintenance protocols, and 4. Each method plays a significant role in ensuring optimal. In different types of solar panels designs, both the bypass and blocking diodes are included by the manufactures for protection, reliable and smooth operation. Bypass Diode in a solar. Bypass diodes are connected in parallel across solar cells to provide an alternative current path when the voltage across a cell is negative due to shading or it becoming faulty This use of bypass diodes in solar panels allows a series (called a string) of connected cells or panels to continue. Solar panels consist of solar cells that convert sunlight into electricity through the photovoltaic effect. You may be wondering, what is the difference?

Well, not much. Learn about bypass diodes that handle shade issues and blocking diodes that keep your batteries safe in this simple guide.

How to block the opening of photovoltaic panels



Bypass Diodes in Solar Panels and Arrays

Bypass diodes in solar panels are connected in "parallel" with a photovoltaic cell or panel to shunt the current around it, whereas blocking diodes are connected in "series" with the PV panels to prevent ...

Solar Panel Bypass Diodes: The Ultimate Guide 2024

Bypass diodes are connected in parallel with individual solar panels to provide a path of current around them in the event of a cell or panel failure or open circuit.



What is Blocking Diode and Bypass Diode in Solar Panel Junction Box?

Bypass Diode in a solar panel is used to protect partially shaded photovoltaic cells array inside solar panel from the normally operated photovoltaic string in the peak sunshine in the same ...

What is Blocking Diode and Bypass

Diode in Solar Panel Junction Box?

Working of Blocking & Bypass Diodes in PV Panels
 PV Cells Without Bypass Diodes
 Shaded PV Cells Without Bypass Diodes
 PV Cells with Bypass Diodes
 Blocking Diodes in Solar Panels
 As mentioned above, the diodes pass the current only in one direction (forward bias) and block in the opposite direction (reverse bias). This is what actually do the blocking diodes in a solar panel. During the normal operation of solar cells at clear sunshine, the solar cells generates electrical energy and let pass the flow of electron in one dir See more on electricaltechnology Basic Electronics Tutorials



Bypass Diodes in Solar Panels and Arrays

Bypass diodes in solar panels are connected in "parallel" with a photovoltaic cell or panel to shunt the current around it, whereas blocking diodes are connected in ...

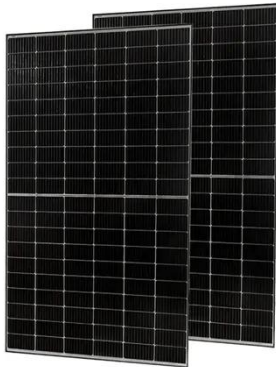


Blocking Diode and Bypass Diode for Solar Panels

A blocking diode and bypass diode are commonly used in solar energy systems and solar panels. Learn how and why blocking diodes and bypass diodes are used.

Blocking Diode And Bypass Diode For Solar Panels

Understanding the roles of blocking diodes and bypass diodes is essential for optimizing your system's performance--especially in both partial and full shading scenarios.



Do Solar Panels Need Blocking or Bypass Diodes?

Solar panels consist of solar cells that convert sunlight into electricity through the photovoltaic effect. Mainly, we use two kinds of diodes for effective solar panels - bypass and ...

Solar Panel Diodes: A Simple Guide to Bypass & Blocking Types

Diodes are crucial parts of solar panel systems. They help manage power flow and protect your investment. Learn about bypass diodes that handle shade issues and blocking diodes that keep ...



How to block the open tube of solar panel , NenPower

To block the open tube of a solar panel effectively, the strategies involve 1. applying physical barriers, 2. utilizing solid insulation, 3. maintaining proper



maintenance protocols, and 4. ...

Understanding Solar Panel Bypass Diodes

Our objective was to design and install a solar panel system that would maintain high efficiency despite potential shading. We decided to incorporate bypass diodes to mitigate the effects of shading and ...



Blocking Diode for Solar Panel

When the panel isn't producing electricity, such as at night, the blocking diode prevents the battery from discharging back into the solar panel. By ensuring current flows only in the desired direction, blocking ...

Contact Us

For catalog requests, pricing, or partnerships, please visit:
<https://www.espay.es>

