

Espay Solar Energy S.L.

JA Solar 455W photovoltaic panel size



Overview

Dimensions: Approximately 2172mm × 1303mm × 35mm, optimized for easy mounting. 5 kg, balancing sturdiness and ease of handling. Efficiency: Module conversion efficiency up to 20. Remark: Electrical data in this catalog do not refer to a single module and they are not part of the offer. They only serve for comparison among different module types. Assembled with MBB bifacial PERCIUM cells and half-cell configuration, these double glass modules have the capability of converting the incident light from the rear side together with the front side into electricity, providing higher output power, lower temperature coefficient, less shading loss. Electrical Characteristics Features: 12 Year product warranty and 25 year linear power output warranty. [View / Download JA Solar Specs sheet 455-470W](#) . JA Solar's n-type bifacial double glass high-performance mono module JAM54D40-LB-455 sets new standards in the solar industry. This work of art, equipped with high-performance solar cells, is presented in a robust black aluminum frame. High Power Output (455W) : The JA Solar 455W module delivers an exceptional power output, making it an ideal choice for residential, commercial, and industrial applications. N-Type Cell Technology: The use of N-type cells enhances the. The JA Solar 455W JAM54D40-455/LB BIFACIAL BF is a bifacial photovoltaic module designed to capture sunlight from both its front and rear surfaces, significantly enhancing energy yield. It incorporates advanced PERC (Passivated Emitter Rear Cell) technology, which improves light absorption and.

JA Solar 455W photovoltaic panel size

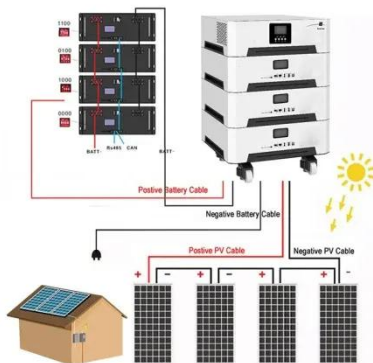


JA Solar JAM54D40-455/LB 455 Watt

We show you the best offers from leading and verified photovoltaic dealers. Compare prices for solar products with one click and save on every purchase. Make a non-binding inquiry; you can then ...

Ja solar 455w datasheet

Overall, the JA Solar 455W panel is a top-of-the-line solar module that offers exceptional efficiency, durability, and performance for residential, commercial, and utility-scale solar installations.

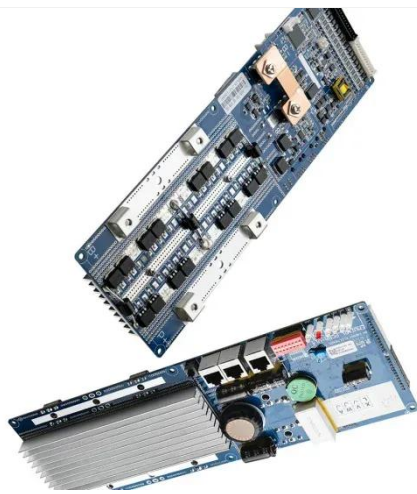
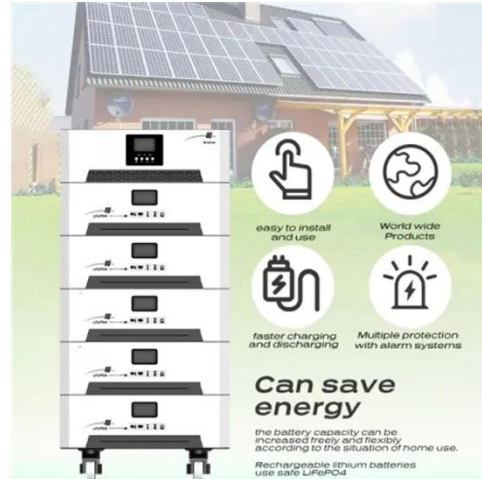


JA 455W Solar Panel Datasheet

Remark: Electrical data in this catalog do not refer to a single module and they are not part of the offer. They only serve for comparison among different module types.

JA Solar 455W Monocrystalline N-Type Double Glass

High Power Output (455W) : The JA Solar 455W module delivers an exceptional power output, making it an ideal choice for residential, commercial, and industrial applications.



JA Solar 455W , Photovoltaic Distributor , PVhurt

Dimensions: Approximately 2172mm × 1303mm × 35mm, optimized for easy mounting. Weight: Around 27.5 kg, balancing sturdiness and ease of handling. Efficiency: Module conversion efficiency up to ...

SOLAR PANEL JA SOLAR 455W

Electrical Characteristics. Features: 12 Year product warranty and 25 year linear power output warranty. View / Download JA Solar Specs sheet 455-470W.



JAM72D20-455/MB/1500V 455W Solar Panel Information

See the table below for available information we have about Shanghai JA Solar Technology Co Ltd



JAM72D20-455/MB/1500V solar panels. We do our best to provide information such as the ...

JA Solar 455W N-type Double Glass Bifacial LB Black Frame MC4 Solar Panels

Ideal for off-grid photovoltaic solar energy installations, these panels stand out for their incredible quality/price ratio and their great power in a small size. Key Features: Assembled with Multi-Busbar ...



JA Solar , Battery Group



JA Solar 455W N Type Bifacial Traceable Panel: Brand: JA Solar Rated Power: 455W Voltage: 39.5V Connector: MC4 Dimensions: 1762 x 1134 x 30mm Panel Quantity: 1 x 455W Solar Array Size: 455W ...

JAM78D10 430-450 MB

Specifications subject to technical changes and tests. JA Solar reserves the right of final interpretation. Remark:

Electrical data in this catalog do not refer to a single module and they are not part of the ...



Contact Us

For catalog requests, pricing, or partnerships, please visit:
<https://www.espay.es>

