

Espay Solar Energy S.L.

Minimum inverter for solar power generation



Solar Panel



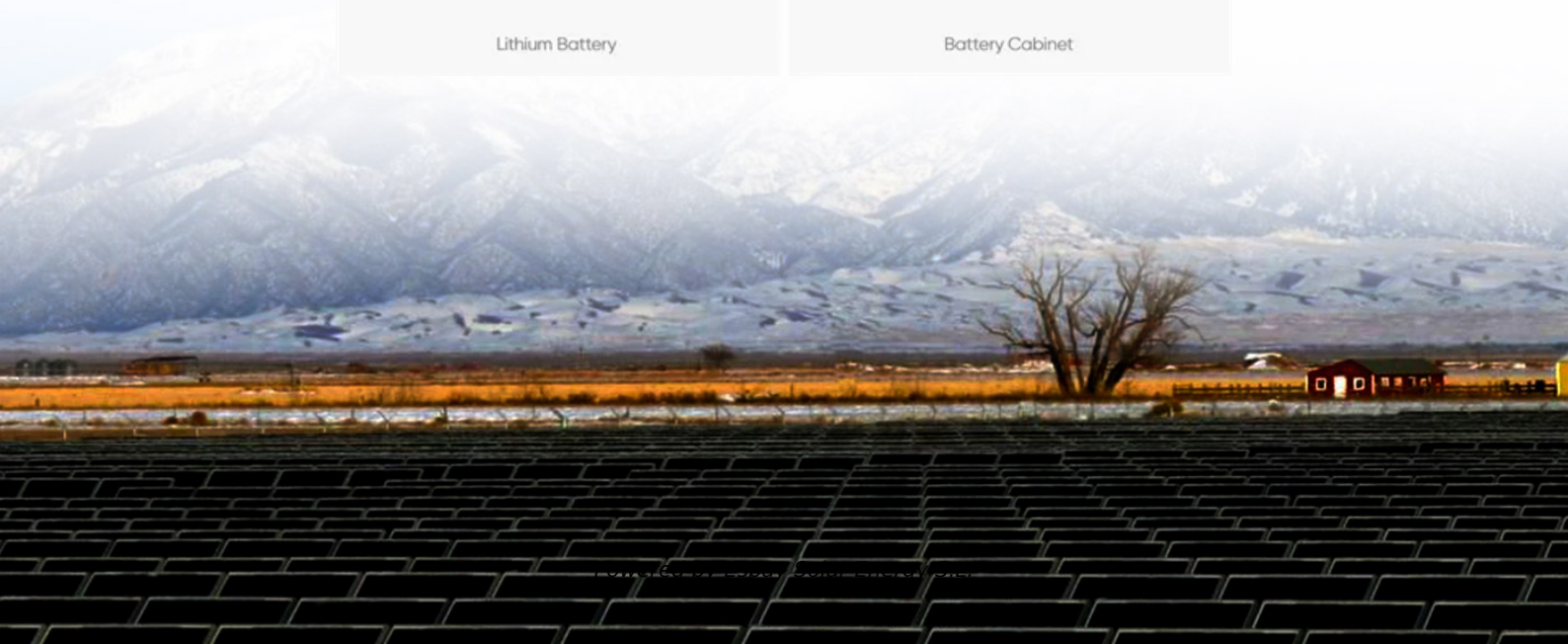
Hybrid Inverter



Lithium Battery



Battery Cabinet



Overview

This guide breaks down what size solar inverter you actually need—so your setup runs smooth, efficient, and stress-free from day one. **What Size Solar Inverter Do I Need?**

A solar inverter should closely match your solar system's output in kW—typically within 80% to 120% of your total. Summary: Understanding the minimum power of a photovoltaic (PV) inverter is critical for optimizing solar energy systems. This article explores how low-wattage inverters work, their applications, and why selecting the right size matters for residential, commercial, and industrial projects. Get it wrong and you risk wasted energy, tripped systems, or unnecessary costs. Your solar panel inverter converts the DC electricity your panels produce into AC power that runs. Choosing the right solar inverter size is critical—and one of the most common questions: what solar inverter size do I need?

Whether you are installing a rooftop system in California, powering a remote cabin in Alberta, or sizing for a community center in Rajasthan, getting it right means.

Minimum inverter for solar power generation



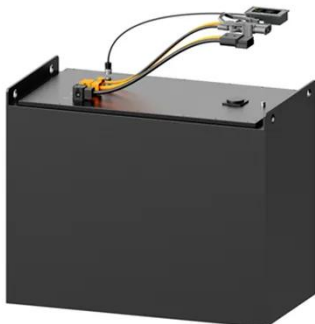
What Is the Minimum Power of a Photovoltaic Inverter? Key Insights

...

Summary: Understanding the minimum power of a photovoltaic (PV) inverter is critical for optimizing solar energy systems. This article explores how low-wattage inverters work, their applications, and ...

The Only Inverter Size Chart You'll Ever Need

During our research, we discovered that most inverters range in size from 300 watts up to over 3000 watts. In this article, we guide you through the different inverter sizes. Additionally, you'll ...



Solar Inverter Size Chart

Solar panels produce DC electricity, but you need an inverter to convert DC power into 120/220 volt AC electricity, Only after conversion can home appliances and other devices use it. If you have a 1000 ...

Complete Solar Inverter Sizing Guide

Get it right and your system runs smoothly for years. In this guide, you'll learn what size solar inverter you need, how to size an inverter for solar systems step by step, how panel output ...



What Size Solar Inverter Do I Need? Experts Break It Down

What Size Solar Inverter Do I Need? A solar inverter should closely match your solar system's output in kW--typically within 80% to 120% of your total panel capacity.

Solar Inverter Sizing Guide: How to Size Your Inverter

Choosing the right solar inverter size can make or break your solar investment. Get it wrong, and you'll either waste money on oversized equipment or lose precious energy production. ...



The Only Inverter Size Chart You'll Ever Need

What Size Solar Inverter Do I Need? A solar inverter should closely match your solar system's output in kW--typically within 80% to 120% of your ...



Inverter Sizing Calculator

Enter your solar array capacity and load requirements to determine optimal inverter size. Inverter Size = MAX (Array Capacity \times 1.15, Peak Load \times 1.25) for safety margin. This formula has been verified by ...



How to Match Solar Panel Inverter Size to Your System Output

Take your loss-adjusted wattage and divide by 1.15 for minimum inverter size. Using our example: $6.4\text{kW} \div 1.15 = 5.6\text{kW}$ minimum. Inverters come in standard sizes like 3kW, 5kW, 6kW, ...

How to Choose the Right Size Solar Inverter: Step-by-Step with Real

Wondering what size solar inverter do I need for your solar system? This guide walks you through calculating inverter size based on panel capacity, power

usage, and safety margins.



How To Size A Solar Inverter in 3 Easy Steps

In this guide, we share 3 easy steps on how to size a solar inverter correctly. We explain the key concepts that determine solar inverter sizing including your power needs, the type and number of ...

Contact Us

For catalog requests, pricing, or partnerships, please visit:
<https://www.espay.es>

