

Espay Solar Energy S.L.

Performance of black crystal photovoltaic panels



Overview

Technology Leadership: Modern black panels achieve 20-25% efficiency with degradation rates of just 0.35% annually, maintaining 85-90% of original capacity after 25 years and operational lifespans extending 30-40 years with proper maintenance. Market Dominance in 2025: Black solar panels now represent over 80% of new residential installations, with manufacturers having completely phased out blue polycrystalline panels as of 2023, making monocrystalline black panels the universal standard for homeowners. Superior ROI Despite Premium. In residential projects, homeowners often choose full black solar panels to maintain a clean and elegant appearance; in commercial and industrial projects, their low glare and architectural integration make them even more appealing. This article will examine the latest trends, exploring the. Monocrystalline solar panels are the top choice for homeowners looking for high efficiency and long-term value. Their sleek, uniform black appearance isn't just about style—it signifies a high-quality construction.

Performance of black crystal photovoltaic panels

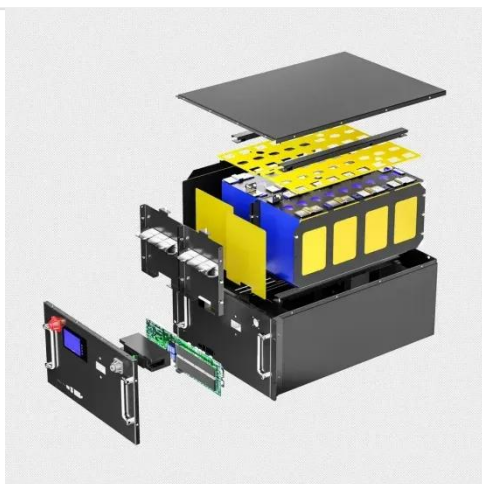


What Are Black Solar Panels? (2026) , ConsumerAffairs®

Black (monocrystalline) solar panels are typically more efficient than other solar panels. (Most people also prefer the way they look.) However, they may perform slightly worse in high

Monocrystalline Solar Panels: Efficiency, Benefits & Performance

Monocrystalline cells are known for their superior efficiency in converting sunlight into electricity, making them a cost-effective choice in the long run. They perform well in various conditions, including low ...



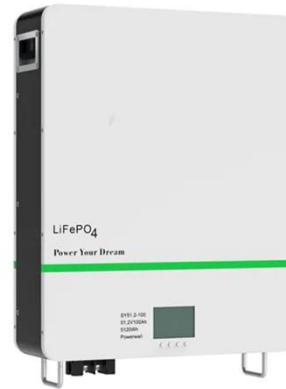
All Black Solar Panels: Functionality and Benefits

Black solar panels, also known as monocrystalline panels, are a technological marvel in the solar energy revolution. Their sleek, uniform black appearance isn't just about style--it signifies a high-quality ...

How about black monocrystalline

solar panels , NenPower

Black monocrystalline solar panels are distinguished by their remarkable performance and efficiency, often achieving conversion rates exceeding 20%. This superior efficiency is primarily due ...



Full Black Solar Panels Are Becoming the New Normal

This article will examine the latest trends, exploring the origins, benefits, limitations, and investment value of full black solar panels.

What Is a Monocrystalline Solar Panel? Definition, Performance

With their sleek, black appearance and high sunlight conversion efficiency, monocrystalline panels are the most common type of rooftop solar panel on the market. ...



Black Solar Panels: Complete 2025 Guide To Performance, Cost

Comprehensive guide to black solar panels: efficiency, aesthetics, cost analysis, top brands, and buying advice. Expert insights for 2025.

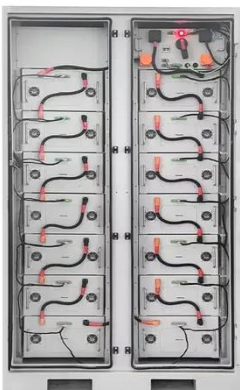


The Great Solar Debate: Blue vs. Black Panels

Monocrystalline (Black) Panels: These are generally more efficient due to their higher purity silicon composition. They perform better in low-light conditions and take up less space for the ...



To Strive forward No Energy Waste



- ✓ All in one
- ✓ 100~215kWh High-capacity
- ✓ Intelligent Integration

Monocrystalline vs. Polycrystalline solar panels

Monocrystalline solar panels have black-colored solar cells made of a single silicon crystal and usually have a higher efficiency rating. However, these panels often come at a higher price. ...

Monocrystalline Solar Panels: 2026 Costs & How They Work

Known for their sleek black design and impressive performance, these panels convert more sunlight into electricity than any other type. They're a smart

pick if you want to make the most ...

Outdoor Cabinet BESS
50 kWh/500 kWh Battery Storage System
Industrial and Commercial Energy Storage



- All in One**
Integrating battery packs
- High-capacity**
50-500kWh
- Degree of Protection**
IP54
- Operating Temperature Range**
-20~60°C(Derating above 50 °C)
- Intelligent Integration**
integrated photovoltaic storage cabinet
- Rated AC Power**
50-100kW
- Altitude**
3000m(>3000m derating)

Contact Us

For catalog requests, pricing, or partnerships, please visit:
<https://www.espay.es>

