

**Espay Solar Energy S.L.**

# **Photovoltaic combiner box installation height**



## Overview

---

The height of a combiner box typically ranges from 12 inches to 36 inches. A solar combiner box is a crucial component in solar energy systems, designed to consolidate the outputs of multiple solar panel strings into a single output that connects to an inverter. This device plays a significant role in both residential and commercial solar installations, particularly when. Ideally, the combiner box should be installed as close as possible to the solar panel array. This minimizes the length of the DC cables, which in turn reduces power losses. Gather all materials beforehand, including the combiner box, specified mounting brackets, approved PV wire, conduit, and all necessary connectors and labels.

## Photovoltaic combiner box installation height

---



### SolarEdge Combiner Box Installation and Connection

Mount the combiner box cover and secure it with four screws with a torque of 1.2 N\*m.

---

### PV Combiner Box Installation: Wall vs Ground Mount Guide

Choosing between wall or ground mounting for your pv combiner box installation? Our guide compares both methods for optimal safety compliance and reliability. Learn the best practice for your project.



---

### How to Install a Solar Combiner Box - Step by Step

Install a solar combiner box by choosing the right location, mounting it securely, wiring solar strings and outputs correctly, ensuring safety, and testing before powering up.

---

### Optimal Photovoltaic Combiner Box

## Installation Height: Best Practices

The installation height of your PV combiner box isn't just about convenience - it's a critical factor determining system efficiency, maintenance costs, and regulatory compliance.



## A Comprehensive Guide to Combiner Boxes in Photovoltaic Systems

Combiner boxes are designed to accommodate the inherent scalability and flexibility of solar installations. As the number of panels or inverters changes, the combiner box can be easily ...

## The Ultimate Guide to Solar Combiner Boxes: From Basics to ...

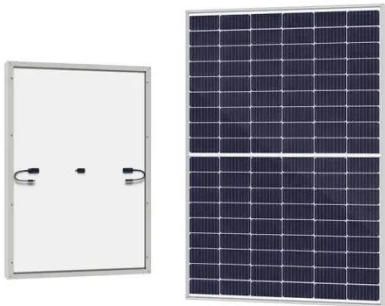
Explore the comprehensive guide to PV Solar Combiner Boxes: Learn about types, components, selection criteria, installation best practices, maintenance, and advanced technologies. ...



## Ground installation height of photovoltaic combiner box

Wiring diagram for a PV combiner box. A PV combiner box is an essential component of a solar photovoltaic (PV)

system, allowing multiple PV strings to be connected and combined into one



### What are the installation dimensions of a combiner box?

The height of a combiner box typically ranges from 12 inches to 36 inches. Smaller combiner boxes, such as those designed for residential solar systems, may be on the lower end of ...



### RM-Solar Combiner Manual-Cover

V) Energy Source Combiner Box. The combiner box is a critical component in PV systems, designed to collect and combine the electrical output from multiple PV string. into a single output circuit. It also ...

### Where should a combiner box be installed in a solar installation?

The combiner box should be installed at a height that is convenient for an adult to reach. It should be mounted securely on a stable surface to prevent it from

falling or being knocked over.



---

## Contact Us

---

For catalog requests, pricing, or partnerships, please visit:  
<https://www.espay.es>

