

Espay Solar Energy S.L.

Photovoltaic panel series grouping wiring diagram



Photovoltaic panel series grouping wiring diagram



Demystifying Photovoltaic Panel Grouping and Wiring: A Step-by ...

Grouping and wiring photovoltaic panels follows similar principles - except your final creation generates electricity instead of sparking childhood nostalgia. This guide will walk you through different ...

A Comprehensive Guide to Understanding PV Solar Panel Wiring Diagrams

Learn how to wire a PV solar panel system with a comprehensive wiring diagram. Find step-by-step instructions and diagrams to help you connect your solar panels, inverters, batteries, and charge ...

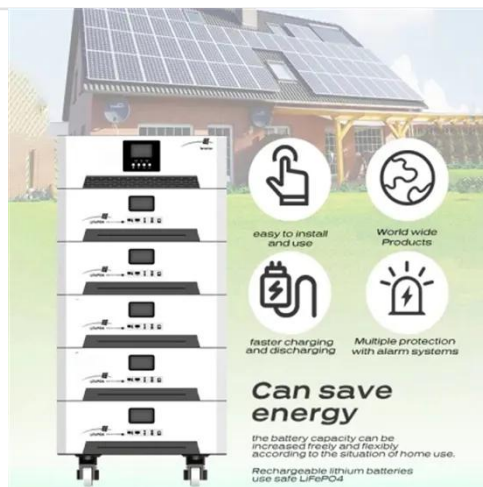


Solar Panel Series Connection Diagram

Solar panel series connections are fundamental to photovoltaic (PV) system design. Understanding the solar panel series connection diagram is crucial for maximizing energy ...

Solar Power: Series & Parallel Connections Explained (PDF)

Master solar panel wiring! Download our FREE PDF guide on connecting solar panels in series and parallel for optimal system performance. Clear diagrams & easy explanations included. ...



The Complete Guide to Solar Panel Wiring Diagrams

Connecting PV modules in series and parallel are the two basic options, but you can also combine series and parallel wiring to create a hybrid solar panel array. Some solar panels have ...

Solar Photovoltaic Power Generation Wiring Tutorial

To do this wiring, make two sets of PV panels and connect them in series. Then, connect the two sets of series-connected solar panels in parallel to the charge connector. This solar system wiring diagram ...



How to Group Photovoltaic Panels: Wiring Diagrams and ...

Series vs Parallel: The Eternal Debate
Imagine if your panels were choir singers. Series wiring makes them sing

in unison (higher voltage), while parallel wiring creates harmony (higher ...



Series, Parallel & Series-Parallel Connection of PV Panels

Key Points Wiring solar panels is the first step, you have to choose between series and parallel depending on your voltage and current needs. A solar panel array (or photovoltaic array) is ...

12.8V 200Ah



How To Wire Solar Panels In Series: Complete Guide 2025

Master series solar panel wiring with our step-by-step guide. Includes safety tips, tools, diagrams, and calculations for 2-4+ panel configurations.

Solar Panel to Electrical Panel Connection Diagram: 4 Illustrated ...

Key Points Wiring solar panels is the first step, you have to choose between series and parallel depending on your voltage and current needs. A solar panel array

(or photovoltaic array) is ...



Series, Parallel & Series-Parallel Connection of PV Panels

What is a Solar Photovoltaic Array? A Solar Photovoltaic Module is available in a range of 3 WP to 300 WP. But many times, we need power in a range from kW to MW. To achieve such a large ...

Contact Us

For catalog requests, pricing, or partnerships, please visit:
<https://www.espay.es>

