

Espay Solar Energy S.L.

Photovoltaic panel short circuit current measurement



Overview

The short circuit current test measures the maximum current (I_{sc}) that a solar panel can generate. This guide will explain the importance of I_{sc} , provide detailed instructions on how to measure it, and discuss the factors that can influence I_{sc} . A short circuit occurs when an unintended low-resistance path is established between two points of differing potential, leading to excessive current flow. As can be seen from table 1 and fi panel can be harmed if your m when the positive and negative leads are shorted together. Interested in Cell Measurements?

We use I-V measurement.

Photovoltaic panel short circuit current measurement

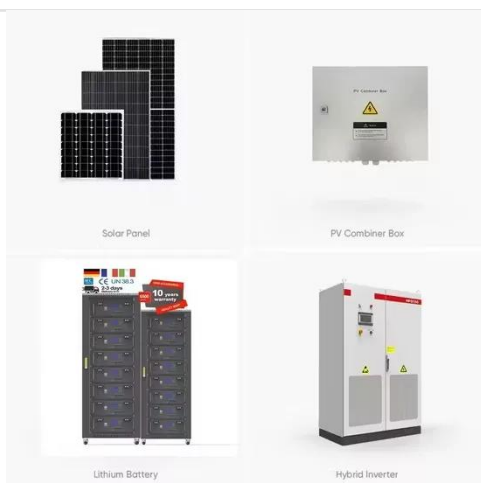


Short Circuit and Fault Current Analysis in Solar PV ...

Learn short circuit & fault current analysis in solar PV systems with calculations, examples, & protection.

Calculation of short-circuit current in photovoltaic panels

In this study, a panel equivalent circuit is simulated in MATLAB using the catalog data of a PV panel KC200GT to study the cell at MPP and study the effect of temperature and



Cell Measurements , Photovoltaic Device Performance Calibration

Cell measurements at NLR include spectral responsivity and current versus voltage (I-V) of one sun, concentrator, and multijunction devices. Reference cell measurements also include linearity of short ...

Solar Panel Short Circuit Current:

What is it? How to Measure?

Short Circuit current is a important thing you need to know about to ensure safety of your Solar Panel. Learn what it is & how to measure it.



How to measure short-circuit current of photovoltaic panels

The video shows you how you could check the function of a solar panel by measure the open-circuit voltage and short-circuit current (U_{oc} , I_{sc}). Marine solar p

What Is the Short Circuit Current of a Solar Panel?

The Short Circuit Current (I_{sc}) defines the highest flow of electrical charge a solar panel can produce. This value is measured by directly connecting the panel's positive and negative ...



How to measure the short circuit current of a solar panel?

Discover how to measure a solar panel's short circuit current accurately for optimal performance with our guide.



PV Current Test (Short Circuit)

The short circuit current test measures the maximum current (I_{sc}) that a solar panel can generate. It is conducted by short-circuiting the panel's output terminals and recording the resulting maximum ...



Inspection of String Circuit Current Tests for Solar PV ...

Learn how you can measure I_{sc} , the short-circuit current, string operational current, and more with Hioki devices.

How To Measure Short Circuit Current Of A Solar Panel?

Measuring the short-circuit current (I_{sc}) of a solar panel is a fundamental step in evaluating its performance and understanding its output capacity. This

guide will explain the ...



Contact Us

For catalog requests, pricing, or partnerships, please visit:
<https://www.espay.es>

