

Espay Solar Energy S.L.

Photovoltaic panel transportation damage



Overview

Meta description: Discover why 12-30% of solar panels get damaged during transport, how improper logistics cost the industry \$2. Explore case studies and actionable solutions. As a solar business professional with over a decade of experience, I've seen firsthand the impact of damaged panels arriving. These solar modules contain tempered glass and delicate cells that are prone to damage. Proper handling and packaging are significant factors for cost control, and system reliability is key as a retailer. Unfortunately, the protocol for transporting PV modules that would become a standard for everybody hasn't been developed yet. Did you know that roughly 1 in. A recent article published in Solar Power World discusses the challenges of protecting solar panels during shipping, handling, and storage.

Photovoltaic panel transportation damage

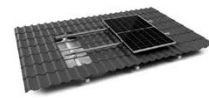


Transporting Solar Panels Safely: Best Practices for Solar Module

Transportation damage is a result of poor logistics and inadequate handling, leading to several microcrack domains all over the module. The largest damage percentage is incurred in the ...

Broken Solar Panels? You're Not Alone.

Despite their durability, panels are vulnerable to damage in transit, with breakage rates of 1-2%. The industry is pushing for improved testing and handling standards to better safeguard ...



TILE ROOF SOLAR MOUNTING SYATEM



STANDING SEAM ROOF SYATEM



ADJUSTABLE TILT FLAT ROOF SYATEM



TRIANGLE FLAT ROOF SYATEM

 TAX FREE






ENERGY STORAGE SYSTEM

Product Model

HJ-ESS-215A(100KW/215KWh)
HJ-ESS-115A(50KW 115KWh)

Dimensions

1600*1280*2200mm
1600*1200*2000mm

Rated Battery Capacity

215KWH/115KWH

Battery Cooling Method

Air Cooled/Liquid Cooled



How to Transport & Ship Solar Panels

While solar panels can take a beating from direct sunlight for more than 12 hours a day, they aren't immune to cracks, micro-cracks and other forms of damage during transportation and ...

How to Protect Solar Panels from

Damage During Transit? Explained

In this article, I'll share industry-tested methods for protecting solar panels during transit. Whether you're a fellow solar professional or a homeowner awaiting your first installation, these ...

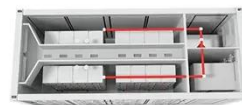


Photovoltaic Panel Transportation Damage Rate: Costs, Causes, and

Meta description: Discover why 12-30% of solar panels get damaged during transport, how improper logistics cost the industry \$2.1B annually, and proven strategies to reduce photovoltaic panel ...

The delicate matter of protecting solar panels during shipping

Right now, there aren't too many solutions for preventing shipping-and-handling damage to solar panels besides using common sense and the utmost care. There is a an International ...



How to Protect Solar Panels from Damage Transporting

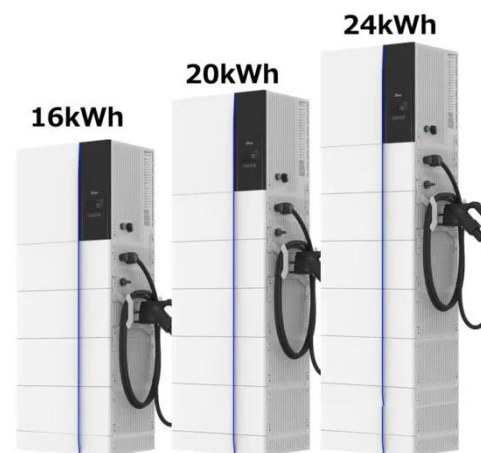
If you are planning on purchasing solar, it takes 5 minutes to learn about how you can protect solar panels from

external transportation or shipping damage



Navigating the Sun's Path: Ensuring Compliance in Solar Panel

Solar panels are fragile, large, and heavy, making them challenging to transport. Even minor impacts compromise efficiency and lifespan, leading to costly replacements. This vulnerability necessitates ...



How to Protect Solar Panels from Damage Transporting

Right now, there aren't too many solutions for preventing shipping-and-handling damage to solar panels besides using common sense and the ...

How to Transport Solar Panels Safely

Master the logistics of moving solar panels. Essential steps for vertical handling, strategic padding, and

securing loads to avoid invisible cell damage.



Long-term issues found in warehoused solar panels - pv magazine USA

When modules are improperly loaded into a shipping container or truck, they are subject to damage due to the vibrations caused in the transportation process and can even shift in a truck if ...

Contact Us

For catalog requests, pricing, or partnerships, please visit:
<https://www.espay.es>

