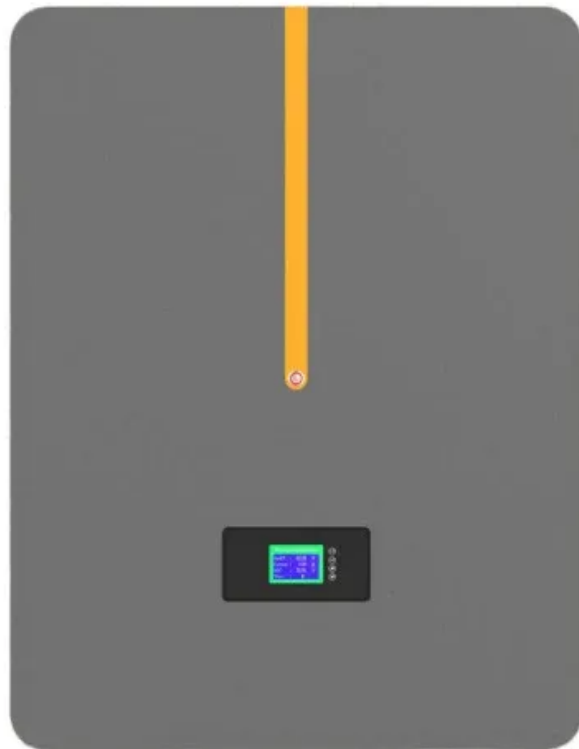


Espay Solar Energy S.L.

Renewable energy growth wellington



Overview

Over 80% of the city's electricity comes from renewable sources, mainly wind and hydro. This figure dwarfs the global average, where renewables account for just 30% of power. The city's wind farms alone generate enough energy to light up 90,000 homes yearly. Yet, not every bulb. Wellington Shire Council has secured a massive \$4. The significant funding win is the result of strong partnerships. Global renewable power capacity is expected to double between now and 2030, increasing by 4 600 gigawatts (GW). 73 million from the Federal Labor Government's Regional Precincts and Partnerships Program (RPPP) announced by Minister Catherine King & Kristy McBain MP on 12 August 2025. The state government has identified Gippsland as one of six Renewable Energy Zones.

Renewable energy growth wellington



Wellington wins a huge \$4.7 Million for renewable energy growth

WELLINGTON Shire Council has secured a massive \$4.73 million funding boost from the Federal Government to deliver its Renewable Energy Land and Infrastructure Plan setting the region ...

Wellington wins a huge \$4.7 Million for renewable energy growth

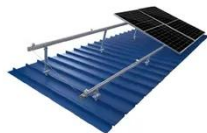
The plan will open up land for development in the south of Wellington Shire, identify critical infrastructure, and ensure the region is ready to welcome large-scale workforce and industry ...



TILE ROOF SOLAR MOUNTING SYATEM



STANDING SEAM ROOF SYATEM



ADJUSTABLE TILT FLAT ROOF SYATEM



TRIANGLE FLAT ROOF SYATEM

Wellington Energy Storage Centre

The NSW Government is in the delivery phase for the states' first renewable energy zone (REZ) in the Central West Orana region. The Central - West Orana REZ is approximately 20,000 square ...



Renewable Energy Planning

The Study assists with positioning the Wellington Shire (and the broader Gippsland region) to transition to renewable energy and to maximise social and economic benefits from more than \$40 billion of ...



Executive summary - Renewables 2025 - Analysis

The forecast for growth in global renewable power capacity is revised down slightly, mainly due to policy changes in the United States and China. The renewable energy growth forecast for the 2025-2030 ...

Green Energy on Show: Is Wellington Green or Just ...

Wellington claims to be green, but does it deliver? Explore the city's renewable energy, recycling, and eco-efforts in this revealing story.



\$4.7 Million for renewable energy planning

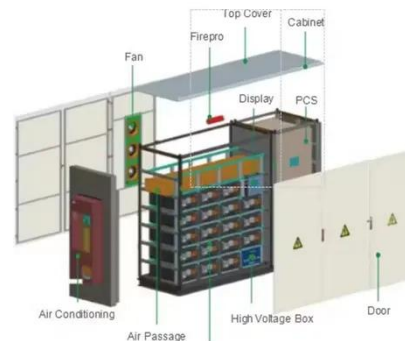
The plan will open land up for development in the south of Wellington

Shire, identify critical infrastructure, and ensure the region is ready to welcome large-scale workforce and industry ...



Renewable energy

Make sustainable water heating and electricity choices for your home and business. Installing a solar hot water system is a sustainable and cost-effective option for water heating. Wind turbines are a cost ...



Renewable Energy

In this article we look at the data on renewable energy technologies across the world; what share of energy they account for today, and how quickly this is changing. Renewable energy generation How ...

Wellington Shire Council gets money for renewable plan

There's no better way to stay connected with your local community than with a digital subscription to the Gippsland Times. Please subscribe or login to

access all content.



Contact Us

For catalog requests, pricing, or partnerships, please visit:
<https://www.espay.es>

