

Espay Solar Energy S.L.

Specifications for waterproofing requirements for horizontal photovoltaic panels

Support Customized Product



Overview

The Federal Energy Management Program (FEMP) provides this tool to federal agencies seeking to procure solar photovoltaic (PV) systems with a customizable set of technical specifications. The Renewable Energy Ready Home (RERH) specifications were developed by the U. Environmental Protection Agency (EPA) to assist builders in designing and constructing homes equipped with a set of features that make the installation of solar energy systems after the completion of the home's. Solar profile is secured to the roof structure. It is important that the Solar profile shall not be welded onto the other membrane, nes are typically installed on steel deck roofs. Contact FEMP for. When installing photovoltaic panels on one- and two-family homes, it's important to understand the requirements for access pathways and the requirements for setback from the ridge, which only apply to roofs with a slope greater than a 2-in-12 pitch. Access pathways are intended to provide access to. Our Waterproof structure for bifacial fameless solar panels is an ideal and popular solution, provide waterproof and more better appearance for solar roof mounting.

Specifications for waterproofing requirements for horizontal photov



Solar Photovoltaic (PV) RERH Specification

The RERH specifications and checklists take a builder and a project design team through the steps of assessing a home's solar resource potential and defining the minimum structural and system ...

Residential Solar Panel Requirements

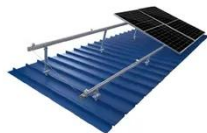
These requirements and other safety concerns for photovoltaic panels can be found in Chapter 11, Section 11.12 of NFPA 1, as well as in Article 690 of NFPA 70 ®, National Electric Code®.



TILE ROOF SOLAR MOUNTING SYATEM



STANDING SEAM ROOF SYATEM



ADJUSTABLE TILT FLAT ROOF SYATEM



TRIANGLE FLAT ROOF SYATEM

Photovoltaic Installations on GAF EverGuard Single-ply ...

All GAF accessories and any modification to the roofing system must be installed in accordance with all current GAF application and specification requirements and guarantee procedures in order to obtain ...



Roof Anchor System for Solar

Panels

A guide for choosing, installing, and flashing roof anchoring systems for solar panels.



Waterproof installation requirements for photovoltaic panels

Roof structures that support photovoltaic panel systems shall be designed to resist each of the following conditions: 1. Applicable uniform and concentrated roof loads with the photovoltaic panel system ...

Technical guidelines for design and installation

When the profiles are installed perpendicular to the water flow on the roof, a gap of minimum 150 mm (gap depends on PV panel size) every 3 meter to drain the water is necessary.



Technical Specifications for On-site Solar Photovoltaic Systems

The Federal Energy Management



Program (FEMP) provides this tool to federal agencies seeking to procure solar photovoltaic (PV) systems with a customizable set of technical specifications.

Waterproof structure for bifacial fameless solar panels

By increasing the Horizontal and Vertical Waterproof Structure, the waterproof design is carried out from the structure, which avoids the risk of leakage caused by the aging of rubber strips in the market, and ...



Horizontal Installation Waterproof Construction Plan for Photovoltaic

As horizontal installations gain popularity for their space efficiency, the waterproof construction plan becomes mission-critical. Let's cut through the noise and explore what actually works in real-world ...

Photovoltaic panel horizontal waterproofing method drawing

This solar panel structure has the

following features (1) the angle of the PV panels can be flexible according to the local sunlight conditions in the early design stage and



Contact Us

For catalog requests, pricing, or partnerships, please visit:
<https://www.espay.es>

