

Espay Solar Energy S.L.

The distance between the photovoltaic panel and the roof



The distance between the photovoltaic panel and the roof



Solar Panel Spacing Gaps (Why They Are Important)

How Much Gap Should Be Between the Solar Panels and the Roof? The gap between the last row of solar panels and the roof's edge should be a minimum of 12 inches or one foot. This ...

What Is the Typical Distance Between Solar Panels and a Roof?

The typical distance between the bottom edge or frame of a solar panel and the roof surface falls within a narrow and consistent range across the residential solar industry. For most sloped-roof ...

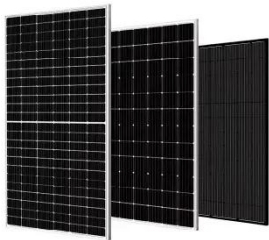


How Far Can Solar Panels Be From The House?

Roof-Mounted Solar Panels: In the case of roof-mounted solar panels, it's often recommended to place them as close to the house as possible while ensuring they receive adequate ...

Optimal Spacing Guidelines for Solar Roof Mounts

How Far Apart Should Solar Panel Brackets Be? Typically, the spacing between solar roof mounts ranges from 4 to 8 feet, with most installations being about 6 feet apart.



How to Calculate the Minimum Distance Between PV Panels?

Understand the importance of minimum installation distance for solar panels, calculation methods, and relevant regulations to ensure efficient operation and compliance of solar energy ...

How Far Should Solar Panels Be? 5 Efficiency Secrets

This article dives into the technical details of solar panel distance and roof spacing, revealing hidden factors like cable resistance, voltage drop, and heat management.



Shade Calculator

Knowing the minimum angle of incidence of sunlight during the year, it is possible to determine the distance between successive rows of photovoltaic panels. The figure below shows the schematic ...



How Much Space Should be between Solar Panels?

There must also be at least 12 inches of space between the solar panel and the edge of the roof to comply with building codes and to keep the array secure. Why is There a Gap Between Solar ...



How Close Can Solar Panels Be to Edge of Roof

Most manufacturers suggest a minimum of 6 to 12 inches between the edge of the solar panel and the roof edge to accommodate mounting hardware and allow for slight movements due to ...

Optimal Solar Panel Row Spacing Calculator , SolarMathLab

Using this calculator, you can determine the ideal distance between rows based on your location, panel tilt, height, and seasonal sun position, ensuring your

solar array performs at its best all year round.



Solar Panel Spacing Gaps (Why They Are Important)

How Much Gap Should Be Under A Solar Panel? How Much Gap Should Be Between The Solar Panels and The Roof? How Much Gap Should Be Between Two Solar Panels? How Much Gap Should Be Between Solar Panel rows? What About Flexible Solar Panel Air Gaps? Can Solar Panels Touch Each other? General Rules About Gaps When Installing Your Solar Panels Why Are The Gaps Between Solar Panels Necessary? Calculating The Gap For Solar Panels Solar Panel Terms and Connections The solar panels should never be flush with the roof. This is because, on very hot days, the heat generated can leak through to your attic and cause it to overheat. Therefore, most manufacturers recommend a gap of four inches between the panels and the roof itself. See more on solvoltaics

Videos of The Distance Between The Photovoltaic Panel and The Roof

Watch video 10:05 Solar Structure Design

Calculations | Roof Top Solar Structure Design | Design Safety & Testing Sustainable Structure 8.8K views Watch full video Watch video 18:44 Sun Chart and Distance Between PV Rows: Optimizing Solar Panel Layout (Lesson 10) Khadija Academy 892 views Watch video 2:22 At What Angle Should Rooftop Solar Panels Be Installed? SolarQuotes 134.9K views Watch video 24:19 How to Mount Solar Panels on your Roof (Beginners Guide) Taddy Digest 3.8K views Watch full video solar math lab

Optimal Solar Panel Row Spacing Calculator , SolarMathLab

Using this calculator, you can determine the ideal distance between rows based on your location, panel tilt, height, and seasonal sun position, ensuring your solar array performs at its best all year round.

Contact Us

For catalog requests, pricing, or partnerships, please visit:
<https://www.espay.es>

