

**Espay Solar Energy S.L.**

# **Vanuatu A-level solar panel component manufacturer**



## Overview

---

PLP is a worldwide designer, manufacturer and supplier of high quality cable anchoring and control hardware and systems, fiber optic and copper splice closures, and high-speed cross-connect devices. Our core markets. In the food and drink sector ABB provides integrated automation, electrification, and digital technologies that help industries outperform. ABB are paving the way to a zero-emission marine industry, providing greater efficiency and reliability to shipowners, and preparing vessels to meet the. Uponor is a global pioneer in intelligent plumbing and climate solutions for single-family homes. REQUEST A DESIGN VIEW OUR PRODUCTS See how this Minnesota-based homebuilder turned to a whole-home Uponor solution to keep his family. It is made up of molecules that each have one carbon atom covalently double bonded to two oxygen atoms. It is found in a gas state at room temperature and at normally-encountered concentrations it is odorless. As the source of.

252. 204-7014 Limitations on the Use or Disclosure of Information by Litigation Support Contractors. 204-7015 Notice of Authorized Disclosure of Information for. The International Fire Code and Appendices B and F, 2021 Edition, published by the International Code Council (“2021 International Fire Code”), are adopted and incorporated by reference into this section with the changes described in Subsection (B) and amendments in Section 25-12-173 (Local.

## Vanuatu A-level solar panel component manufacturer

---



### Carbon dioxide

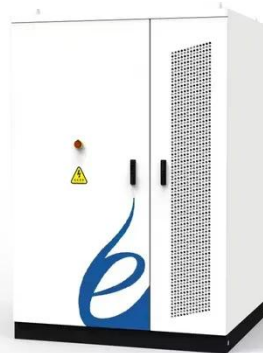
Traditionally, the carbonation of beer and sparkling wine came about through natural fermentation, but many manufacturers carbonate these drinks with carbon dioxide recovered from the fermentation ...

---

### Carbon dioxide

OverviewCommercial usesChemical and physical propertiesBiological roleHuman physiologyConcentrations and role in the environmentSourcesHistory of discovery

Around 230 Mt of CO<sub>2</sub> are used each year, mostly in the fertiliser industry for urea production (130 million tonnes) and in the oil and gas industry for enhanced oil recovery (70 to 80 million tonnes). Other commercial applications include food and beverage production, metal fabrication, cooling, fire suppression and stimulating plant growth in greenhouses.



---

### Ministry of External Affairs Annual Report 2012-2013

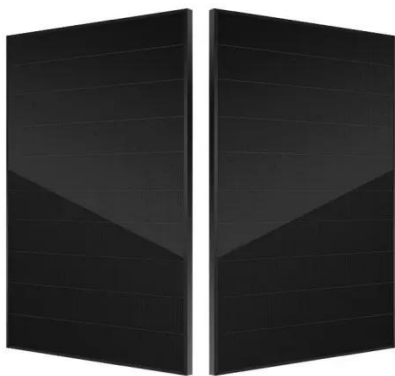
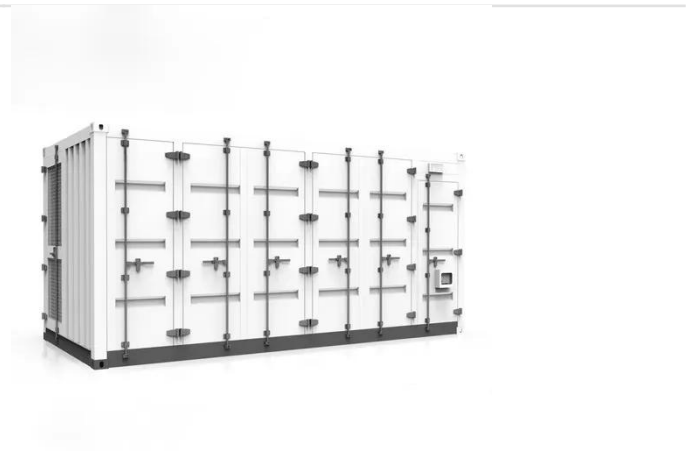
Annual Report 2012-2013 of the Ministry of External Affairs, India. Foreign policy,

international relations, and cooperation initiatives.



### **ABB Group , Helping industries outrun - leaner and cleaner , ABB**

Global technology leader in electrification and automation. ABB helps industries run at high performance, while becoming more efficient, productive and sustainable.



### **Normal 60b3e4c68e855**

Continue Alsons/ aws information systems inc pinoyexchangesa na ng ang the to and of at ko mga a on in PM for by Pos

### **PEX Products for Residential & Commercial Applications , Uponor**

Uponor offers durable PEX piping, fittings, and other products for plumbing, radiant heating and cooling. Learn why

PEX is preferred by plumbers, builders and homeowners alike.

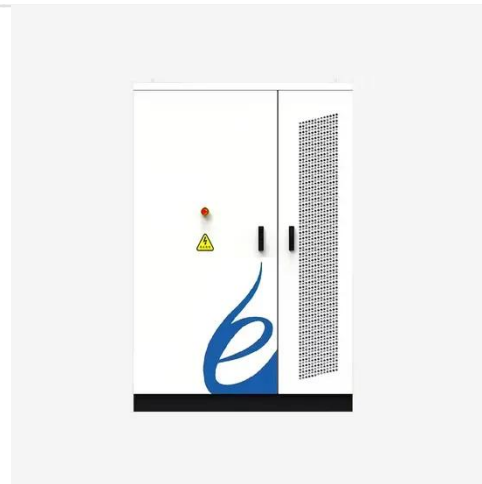


### (PDF) A Seaman's Dictionary

Ozone: Component atmospheric gas that limits solar radiation penetration. Back to top P P: Code flag; All to report aboard, the vessel is about to sail. By a fishing vessel, my nets are fast on an obstruction ...

### PLP , Electric power and fiber optic communications infrastructure

PLP is a worldwide designer, manufacturer and supplier of high quality cable anchoring and control hardware and systems, fiber optic and copper splice closures, and high-speed cross-connect ...



### Austin, Texas

An independent exit, independent stairway, or independent exit ramp is an exit or egress component that does not require the occupant to travel within 10



feet (3.048 m) of another apartment's door or ...

## Cathode ray tube

The only visible differences are the single electron gun, the uniform white phosphor coating, and the lack of a shadow mask. A cathode ray tube (CRT) is a vacuum tube containing one or more electron ...



## Contact Us

For catalog requests, pricing, or partnerships, please visit:  
<https://www.espay.es>

