

Espay Solar Energy S.L.

What is the voltage of the base station battery pack when fully charged



What is the voltage of the base station battery pack when fully charged



Custom Battery Pack Voltage: Comprehensive Guide for Determining

NiMH batteries have a nominal voltage of 1.2V, but they can provide up to 1.4V when fully charged. NiCad and NiMH batteries both have a fully charged voltage of 1.4V. Lead-acid batteries have a fully ...

What is the voltage of a fully charged battery pack?

Since I think there are 6 batteries in series, is the full charged voltage $4.2 \times 6 = 25.2v$? And then the discharged voltage, let's say $3 \times 6 = 18$ for a 4.2v full charged cell and 3v for a ...

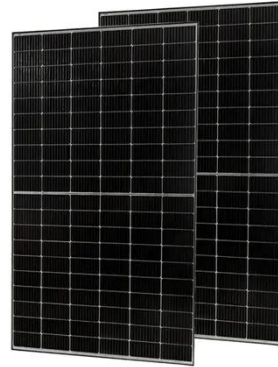


What Should Battery Pack Voltage Be When Fully Charged?

For most common battery types, such as lead-acid and lithium-ion, fully charged voltages vary: lead-acid batteries typically read 12.6V to 12.8V, while lithium-ion batteries can reach up to ...

Fully Charged Car Battery Voltage: What It Means and How to Check

Understanding the voltage of a fully charged car battery helps drivers diagnose starting issues, plan maintenance, and extend battery life. This article explains the expected voltage in various states of ...



What voltage indicates a fully charged battery?

Fully charged voltage reflects a battery's peak electrochemical potential after charging. For lithium-ion batteries, this ranges from 3.65V/cell (LiFePO4) to 4.2V/cell (NMC), multiplied by ...

Fully Charged LiPo Voltages: How to Verify Your Battery Has ...

Learn how to verify your LiPo battery is fully charged by measuring voltage correctly. Step-by-step guide covers standard LiPo voltages, safe procedures, common errors, and ...



Fully Charged Battery: How Many Volts And Optimal Voltage Levels

A fully charged lithium-ion battery typically has a voltage of about 4.2 volts per cell. This voltage level represents the maximum potential of the battery when



it reaches full capacity during ...

LiFePO4 Battery Pack: 2025 Technical Parameters Guide

The operating voltage range is the safe voltage window for a LiFePO4 battery pack, from 2.5V (fully discharged) to 3.65V (fully charged). Staying within this range (10V-14.6V for a 12.8V pack) ...



Battery Voltage Explained: Nominal, Charged, Minimum, and Cut-Off ...

Charged voltage (also called full-charge voltage) is the highest voltage a cell reaches when fully charged. Exceeding this voltage can damage the battery and reduce its lifespan, so proper ...

A guide to lithium battery full charge voltage mechanics

When full charge, measured without disconnecting the charger, it is generally around 14.5 volts, up to 14.9 volts. After disconnecting the charger for 24 hours,

it is usually around 13 volts ...



Contact Us

For catalog requests, pricing, or partnerships, please visit:
<https://www.espay.es>

