

Espay Solar Energy S.L.

What is the weight of 540 photovoltaic panels



Overview

Let's cut to the chase - a standard LONGi Hi-MO 5 540W panel tips the scales at approximately 23. But wait, before you zone out on numbers, here's why this figure deserves your full attention: That's equivalent to carrying a medium-sized dog up your roof for every. Standard residential solar panels are typically around 5.5 feet wide and weigh between 40 to 50 pounds. Understanding these specifications is crucial for determining roof. These panels cover an area of 17.13. The weight of a 540 photovoltaic panel power output of 540 watts and empl halves, which are then wired solar panel's wattage or power output. This weight makes them manageable, but still requires careful lifting during installation. Why is knowing the. This 540W Solar Panel is a monocrystalline module and 144 cells (6#215;24) manufactured by one of the leading manufacturers "Jinko Solar" a top brand in the world photovoltaic industry.

What is the weight of 540 photovoltaic panels



The Ultimate Guide to Solar Panel Size, Weight & Wattage (2025)

Find the exact solar panel size & weight in our 2025 guide. Our complete chart compares models by ft/cm and lbs/kg to help you plan your installation.

How Heavy Are LONGi 540 Photovoltaic Panels? (And Why It Matters ...

Let's cut to the chase - a standard LONGi Hi-MO 5 540W panel tips the scales at approximately 23.5 kg (51.8 lbs). But wait, before you zone out on numbers, here's why this figure deserves your full

...



Solar Panel Size And Weight: A Comprehensive Guide

Solar panels weigh around 61.73 pounds. As you may recall, these larger panels usually provide 350 to 400 watts. The weight of a solar panel per unit is an important consideration when deciding which ...

Solar Panels Size & Weight (Including Commercial Dimensions)

The weight also varies based on the type of material used to make the solar panel, due in part to the manufacturing process. For example, a 365-watt monocrystalline solar panel could weigh

...



Solar Panel Size And Weight: A Comprehensive Guide

These panels cover an area of 21.13 square feet and weigh about 50 pounds. These larger panels are often chosen for more extensive solar projects. For even larger-scale commercial installations,

MonoPERC Half Cut Panel Series 540/550W

Luminous Power Technologies Pvt. Ltd. Solar Panel Series MonoPERC Half Cut Panel Series 540/550W. Detailed profile including pictures, certification details and manufacturer PDF.



How Much Do Solar Panels Weigh? 1.30 - 2,608.7 lbs Chart

We have sampled 6 different solar panels with wattages ranging from 100W to 400W, and total weights ranging from 11.5 lbs to 51.8 lbs, to figure out what is

a typical solar panel weight per square foot.



Photovoltaic 540 panel weight

The weight of a solar panel per unit is an important consideration when deciding which size is best for your home, which we will discuss further in a later section.

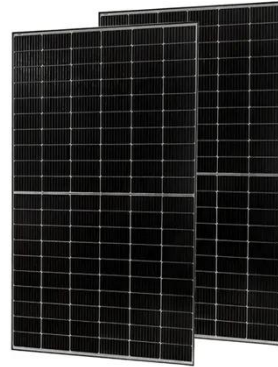


The weight of a 540 photovoltaic panel

Solar panels weigh around 61.73 pounds. As you may recall, these larger panels usually provide 350 to 400 watts. The weight of a solar panel per unit is an important consideration when deciding which ...

Solar Panel Weight Guide

Learn the average weight stats for both home and business solar panels, as well as some FAQs about solar panels' weight.



average photovoltaic solar panel weight guide

Generally, standard residential photovoltaic panels weigh between 40 and 50 pounds (about 18 to 22 kilograms). This weight makes them manageable, but still requires careful lifting ...

Contact Us

For catalog requests, pricing, or partnerships, please visit:
<https://www.espay.es>

