

**Espay Solar Energy S.L.**

# **When can flywheel energy storage be put into practical use**



## Overview

---

Flywheels can charge and discharge energy rapidly, making them particularly well-suited for applications that require high power density and fast response times, such as grid stabilization and frequency regulation. Flywheel energy storage (FES) works by spinning a rotor (flywheel) and maintaining the energy in the system as rotational energy. When energy is extracted from the system, the flywheel's rotational speed is reduced as a consequence of the principle of conservation of energy; adding energy to the. Flywheels can store grid energy up to several tens of megawatts. By capturing energy through the rotation of a flywheel and delivering it quickly when needed, systems based on flywheel energy storage promise long lifetimes, very high cycle frequencies, and. Large synchronous flywheels are also used for energy storage, yet not to be mistaken with FESS.

## When can flywheel energy storage be put into practical use

---



### Flywheel energy storage

Overview  
Main components  
Physical characteristics  
Applications  
Comparison to electric batteries  
See also  
Further reading  
External links

A typical system consists of a flywheel supported by rolling-element bearing connected to a motor-generator. The flywheel and sometimes motor-generator may be enclosed in a vacuum chamber to reduce friction and energy loss. First-generation flywheel energy-storage systems use a large steel flywheel rotating on mechanical bearings. Newer systems use carbon-fiber composite rotors that have a hi...

### Flywheel energy storage

First-generation flywheel energy-storage systems use a large steel flywheel rotating on mechanical bearings. Newer systems use carbon-fiber composite rotors that have a higher tensile strength than ...



### Flywheel Energy Storage System Basics

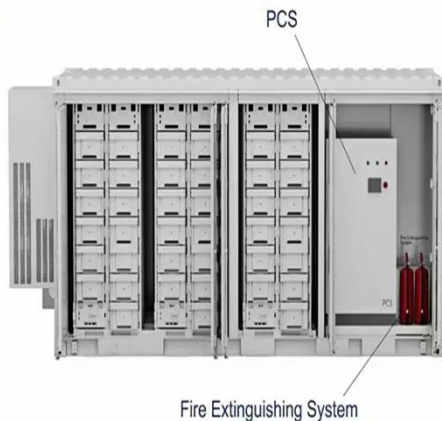
Anything to do with energy storage



attracts us, although a flywheel energy storage system is very different from a battery. Flywheels can store grid energy up to several tens of ...

## Technology: Flywheel Energy Storage

FESS can be used in conjunction with medium and long duration mechanical/thermal/chemical storages to mitigate slow ramp up times of the latter and accelerate storage response.



## Flywheel Energy Storage Systems and Their Applications: A Review

This study gives a critical review of flywheel energy storage systems and their feasibility in various applications. Flywheel energy storage systems have gained increased popularity

## Flywheel Energy Storage: Alternative to Battery Storage

Flywheel energy storage systems offer a durable, efficient, and environmentally friendly alternative to batteries, particularly in applications that require

rapid response times and short ...



## Exploring Flywheel Energy Storage Systems and Their Future

In this section, we will look closely at the comparative analysis of flywheel energy storage systems (FESS) alongside alternative storage solutions, particularly battery storage and pumped hydro storage.

### Flywheel Energy Storage Explained: Fast, Durable And Reliable Grid

By capturing energy through the rotation of a flywheel and delivering it quickly when needed, systems based on flywheel energy storage promise long lifetimes, very high cycle ...

### Home Energy Storage (Stackble system)



- Product Introduction**
- 1 Scalable from 10 kWh to 50 kWh
  - 2 Self-Consumption Optimization
  - 3 Integrated with inverter to avoid the compatibility problem
  - 4 LFP battery, safest and long cycle life
  - 5 Stackable design, effortless installation
  - 6 Capable of High-Powered Emergency-Backup and Off-Grid Function

## Flywheel Energy Storage Systems and their Applications: A Review

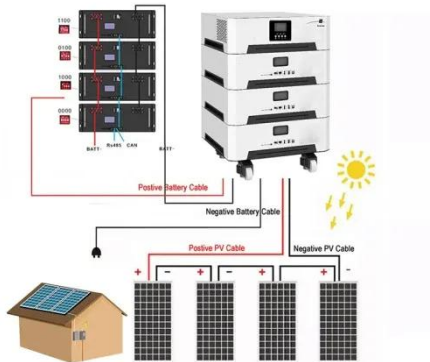
Application areas of flywheel technology will be discussed in this review paper in fields such as electric vehicles, storage

systems for solar and wind generation as well as in uninterrupted power supply ...



## Applications of flywheel energy storage system on load frequency

Flywheel energy storage systems (FESS) are considered environmentally friendly short-term energy storage solutions due to their capacity for rapid and efficient energy storage and release, ...



## Flywheels in renewable energy Systems: An analysis of their role in

This paper presents an analytical review of the use of flywheel energy storage systems (FESSs) for the integration of intermittent renewable energy sources into electrical grids and microgrids.

## Contact Us

For catalog requests, pricing, or partnerships, please visit:  
<https://www.espay.es>

