

Espay Solar Energy S.L.

Which inspection batch should be used for photovoltaic panels



Overview

Quick Answer: Solar panels require three types of inspections: a mandatory final inspection for new installations before activation, annual DIY self-inspections, and professional inspections every two years. Warranty Protection Requires Documentation: Most solar equipment manufacturers require documented commissioning procedures to validate warranty coverage, and without proper commissioning documentation, system owners face voided equipment warranties worth tens of thousands of dollars, insurance. Which inspection batch should solar energy use?

1. They're also the key to unlocking peak system performance for your clients. SECTION 1 – Field Inspection Guide: The purpose of this section is to give the field inspector a single-page reminder of the most important items in a field inspection. SECTION 2 – Comprehensive. Before any solar system can be energized, it must clear a crucial milestone: the final inspection. Key items to check include panel surface condition, electrical connections, mounting.

Which inspection batch should be used for photovoltaic panels

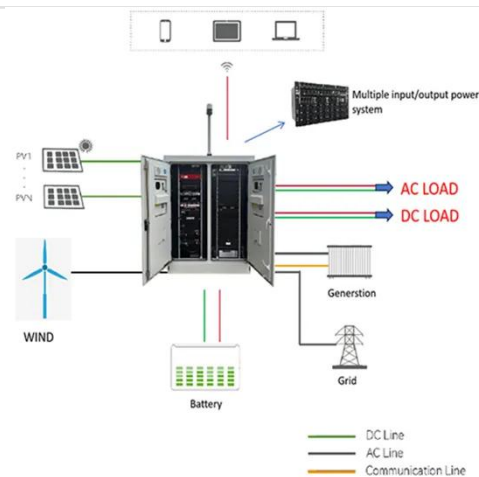


Which inspection batch should solar energy use? , NenPower

The selection of an inspection batch has direct implications for solar energy performance. An appropriate inspection batch ensures that solar panels undergo rigorous testing to verify their ...

Optimizing Solar Inspections: A Construction Pro's Guide , Procore

Various inspection methods are employed to confirm solar photovoltaic systems operate safely and efficiently, each using different techniques and technologies to assess components and ...



Solar Commissioning Guide: Complete PV System Testing



Comprehensive guide to solar commissioning procedures, testing requirements, and performance verification for residential, commercial, and utility-scale PV systems.

Essential Quality Inspection

Standards for Photovoltaic Cell Modules

Summary: Discover the critical quality inspection standards and testing protocols for photovoltaic (PV) modules. Learn how international certifications like IEC 61215 and UL 1703 ensure solar panel ...



Solar Panel Inspection Checklist: What To Check & When To Inspect

Quick Answer: Solar panels require three types of inspections: a mandatory final inspection for new installations before activation, annual DIY self-inspections, and professional inspections every two ...

Solar Panel Inspection: Full Guide and Best Practices

Learn everything you need to know about solar panel inspections, from AHJ requirements to best practices for maintenance and long-term system performance.



Solar Inspection Process: Best Practices, Pitfalls & Checklists

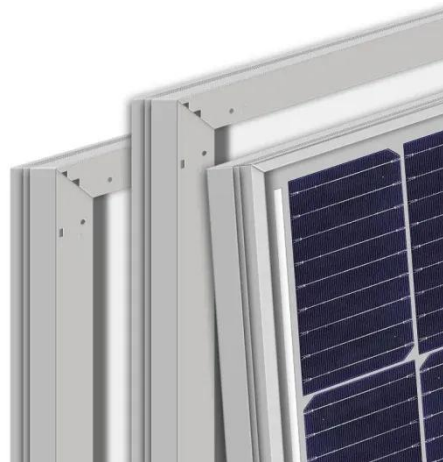
Before any solar system can be energized, it must clear a crucial milestone: the final inspection. This



step--overseen by the local Authority Having Jurisdiction (AHJ)--ensures that the ...

Solar PV Post-Evaluation Checklist

Actual performance should be within about 5% of expected STC power. This procedure includes system nameplate rating (kW), solar irradiance measurement (W/m²) and module cell temperature (C).



Inspection Checklist Guide for PV Systems in One

SECTION 2 - Comprehensive Reference: This reference details items that may be relevant in the field inspection of rooftop PV systems that comply with the comprehensive or simplified versions of the ...

Best practices for solar system commissioning and acceptance

Engineering, Procurement and Construction (EPC) contractor. This is the process of assuring safe operation of a

solar photovoltaic (PV) system and making sure it is compliant with environmental and ...



Contact Us

For catalog requests, pricing, or partnerships, please visit:
<https://www.espay.es>

